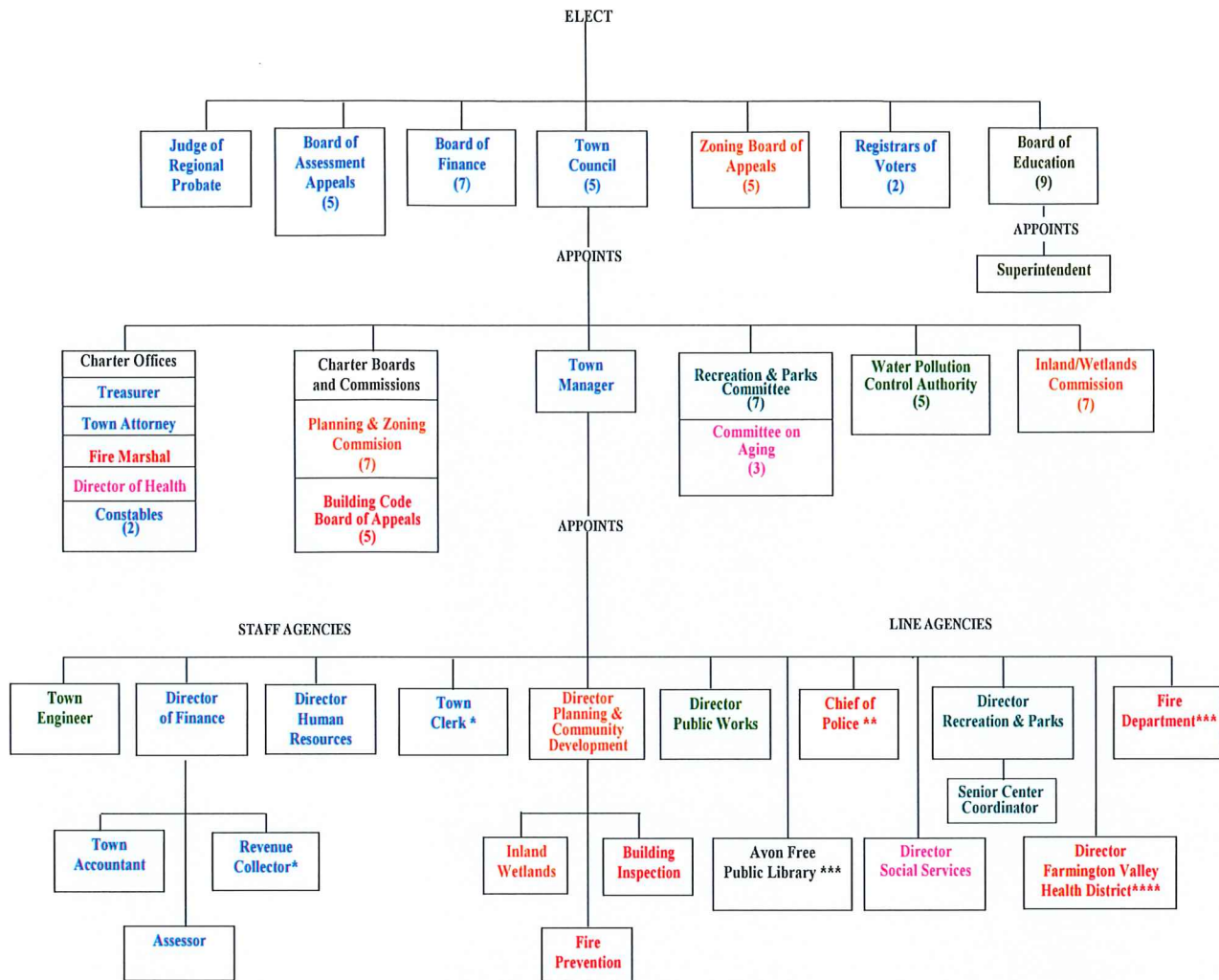


# ORGANIZATIONAL CHART FOR THE TOWN OF AVON



\* Recommended by Town Manager, approved by Town Council.

\*\* Chief of Police position currently vacant. Temporary head of Police Department is the Director of Police Services.

\*\*\* The Town funds the Avon Volunteer Fire Department and Avon Free Public Library, Inc.

\*\*\*\* The Town participates in a Regional Health District.

- General Government
- Public Safety
- Public Works
- Health and Social Services
- Recreation and Parks
- Education and Cultural
- Conservation and Development

## **TOWN OF AVON – PRINCIPAL OFFICIALS**

---

### **TOWN OF AVON PRINCIPAL OFFICIALS AT JANUARY 1, 2022**

#### **TOWN COUNCIL**

Dan Polhamus, Chairman  
Barbara Ausiello                      Heather Maguire  
Jason Indomenico                      Anthony Weber

#### **BOARD OF FINANCE**

Catherine Salchert, Chairperson  
Charles Harvell, Vice Chair                      Carl Gisnarian  
Houston Putnam Lowry, Secy.                      Brian Loveless  
Margaret Bratton                      Ellen Retelle

#### **BOARD OF EDUCATION**

Debra Chute, Chairperson  
Jacqueline Blea                      Thej Singh  
Jeffrey S. Fleischman                      Elizabeth Sommerkorn  
Lynn Katz                      Jay Spivak  
Lisa Seminara                      Laura Young

#### **GENERAL GOVERNMENT**

Town Manager	Brandon Robertson
Town Accountant	Laurie Dorn
Town Attorney	Alfred E. Smith, Jr.
Town Clerk	Nick Hogan
Town Engineer	Lawrence E. Baril
Town Planner	Hiram Peck
Town Treasurer	Charles Harvell
Director of Finance	Tom DiStasio
Director of Human Resources	Stephanie Askeland
Director of Recreation & Parks	Ruth Checko
Director of Social Services	Alan E. Rosenberg
Director of Public Works	Bruce Williams
Assessor	Harry DerAsadourian
Building Official	Rich McKinnon
Collector of Revenue	Deborah Fioretti
Librarian	Glenn Grube
Chief of Police*	Vacant
Director of Police Services*	James Rio
Fire Chief	Bruce Appell

#### **EDUCATION**

Superintendent of Schools	Dr. Bridget Heston Carnemolla
Business Manager	Susan Russo

\*Chief of Police position currently vacant. Temporary head of Police Department is the Director of Police Services.

## TOWN OF AVON – PRINCIPAL OFFICIALS

---

### Town Council Members



(Left to Right): Anthony Weber, Heather Maguire, Dan Polhamus - Chairman, Barbara Ausiello, and Jason Indomenico

### Board of Finance Members



### PURPOSE AND CONTENT

Understanding a municipal budget can often be a confusing exercise for the typical resident of any community. This introduction attempts to provide background material for the average person to understand and use this budget document.

This fiscal year 2022/2023 budget document is comprised of legally required budget information as well as various illustrative graphs and background information that may be helpful to the reader. In order to facilitate its use, it has been structured to first present summary information and then progressively more detailed information. This budget document is divided into five sections. Each of these sections is further divided into subsections that present various kinds of information. All funds are included in the audited financial statements.

*Please note that throughout this budget book, we have used Excel spreadsheets to prepare our charts and graphs. Keeping that in mind, combined with the fact that we round off to two decimal places, there may be a few instances where the calculated percentages are slightly off (i.e. 100.01%).*

#### 1. Budget Overview

#### 2. Introduction Section (Tab A)

This section describes the organization of the budget document and provides background information about the Town of Avon, its government and management organization.

Subsections within this Introduction Section are as follows:

- Organizational Chart and Principal Officials
- Purpose and Content
- General Information about Avon
- Demographic Statistics
  - a. Demographics and Economic Statistics
  - b. Assessed and Estimated Actual Value of Taxable Property
  - c. Principal Taxpayers
  - d. Principal Employers
  - e. Operating Indicators by Function/Program
  - f. Property Tax Levies and Collections
  - g. Capital Asset Statistics by Function/Program

#### 3. Revenue Section (Tab B)

This section presents detailed analysis of all budgeted funds supported by appropriate tables. Revenue estimates for key revenue categories are examined in detail. Subsections within the Revenue Section are as follows:

- Overview
- Property Taxes and Assessments
- Intergovernmental Grants
- Licenses, Fees and Permits
- Charges for Current Services
- Other Local Revenues
- Special Revenue Funds
- Use of Fund Balance: General Fund
- Revenue Detail: All Funds, General Fund, Special Revenue Funds
- Combining Statements of Revenues, Expenditures and Changes in Fund Balances in Governmental and Nonmajor Governmental Funds

## TOWN OF AVON – PURPOSE AND CONTENT

---

### 4. Expenditures Section (Tabs C-Q)

This section presents a broad picture of all Town expenditures. It shows expenditure plans on a department or fund basis, including organizational charts. The Avon Board of Education submits a separate detailed budget document on all expenditures, including appropriate analysis directly to the Town Council by February 15, as specified in the Town Charter; a summary of the Board of Education's Budget is located in the subsection entitled General Fund - Education and Cultural.

Subsections within the Expenditures Section are as follows:

- Overview Municipal Budget Highlights
- Expenditures by Fund
- Expenditure Definitions and Expenditure Chart as follows:

General Fund (Appropriated): The General Fund is the general operating fund of the Town and operates under a legal budget. It is used to account for all financial resources except those required to be accounted for in another fund.

- a. General Government
- b. Public Safety
- c. Public Works
- d. Health and Social Services
- e. Recreation and Parks
- f. Cultural and Education
- g. Conservation and Development
- h. Miscellaneous
- i. Debt Service

Capital Projects Funds (Appropriated): Capital Projects Funds are used to account for financial resources to be used for the acquisition or construction of major capital facilities. They are also used to account for appropriations and expenditures of capital projects. Expenditures are budgeted on a non-lapsing basis.

*Capital and Nonrecurring Expenditures Fund (CNREF)*: To account for appropriations and expenditures related to certain capital and large nonrecurring expenditures. The Fund is authorized by Connecticut General Statutes as a mechanism for establishing a "reserve" for future large expenditures. Statutory limits are placed on the annual addition and total accumulation of the reserve.

*Capital Improvement Fund Account (CIFA)*: To account for various other projects and capital expenditures over \$20,000 in cost and with an expected life of at least five (5) years. Financing for these costs came from General Fund appropriations and general obligation bond proceeds.

Fiduciary Funds (Appropriated within General and Sewer Special Revenue Funds): Trust and Agency Funds are used to account for assets held by the Town in a trustee capacity or as an agent for individuals, private organizations, other governments or other funds. These include pension trust and custodial funds.

## TOWN OF AVON – PURPOSE AND CONTENT

---

Pension Trust funds are accounted for similar to private business. They account for the accumulation of resources for pension benefit payments to qualified employees: Police, Public Works, Non-Organized, Board of Education, and Dispatchers. The appropriations for this fund are in the General Fund and the Sewer Special Revenue Fund.

Other Post Employment Benefits Trust Funds provide funding for the actuarially determined share of the Town of Avon's liability for health and other post-employment benefits to retired employees of the Town.

Special Revenue Funds (Appropriated, except for \*): Special Revenue Funds are used to account for the proceeds of specific revenue sources that are legally restricted to expenditures for specified purposes and operate under legal budgets.

*Forest, Park, and Open Space Management Fund:* To provide a dedicated source of revenue from, and improvements and maintenance to, Town-owned or Town-managed forests, parks and open space areas.

*Sewer Fund:* To account for the collection of sewer use charges used to partially defray the operating expenditures related to sewer use and to account for the collection of inspection fees which are used to reimburse the Town for engineering and inspection services incurred by the General Fund. The fund also accounts for the collection of sewer connection charges and sewer assessments.

*Police Special Services:* To account for Police services on a reimbursement basis to individuals, businesses and groups for which the Town is, in turn, compensated.

*Town Aid Road Fund (TAR):* To account for improvements to Town roads funded by State funds.

*Recreational Activities/Facility Maintenance/Senior Citizen Recreation Funds:* To account for various programs conducted by the Recreation Department and include covering all direct costs for reimbursable expenses associated with running these activities.

*Local Capital Improvement Program (LOCIP):* To account for funding pursuant to Public Act 87-584 to reimburse municipalities for funds spent on infrastructure projects.

\* *Fisher Meadows/Fisher Old Farms:* To account for uses of conservation, farming, recreation, and open space in accordance with deeds, agreements, and grant requirements of the Fisher Family and the State of Connecticut.

*State and Federal Education Grants Fund:* To account for State and Federal education prepayment grants. Resources utilized in the various programs for this fund are determined by the Board of Education.

*School Cafeteria Fund:* To separately account for the operations of the school cafeterias. The Town's participation in the State- administered Federal Child Nutrition Program is reported in this fund.

## TOWN OF AVON – PURPOSE AND CONTENT

*Use of School Facilities Fund:* To account for user charges and expenditures associated with the after school use of Board of Education facilities by outside organizations.

\* *Post-Retirement Medical Benefits Trust Fund* is to provide funding for the actuarially determined share of the Town of Avon's liability for post-retirement employee medical costs and to fund all or part of such liability on an annual basis using revenues generated by the Trust Fund.

*Technology Protection Plan Fund:* Established for the purpose of repairing and/or replacing devices loaned to students of the Avon Public Schools in accordance with Board of Education policy.

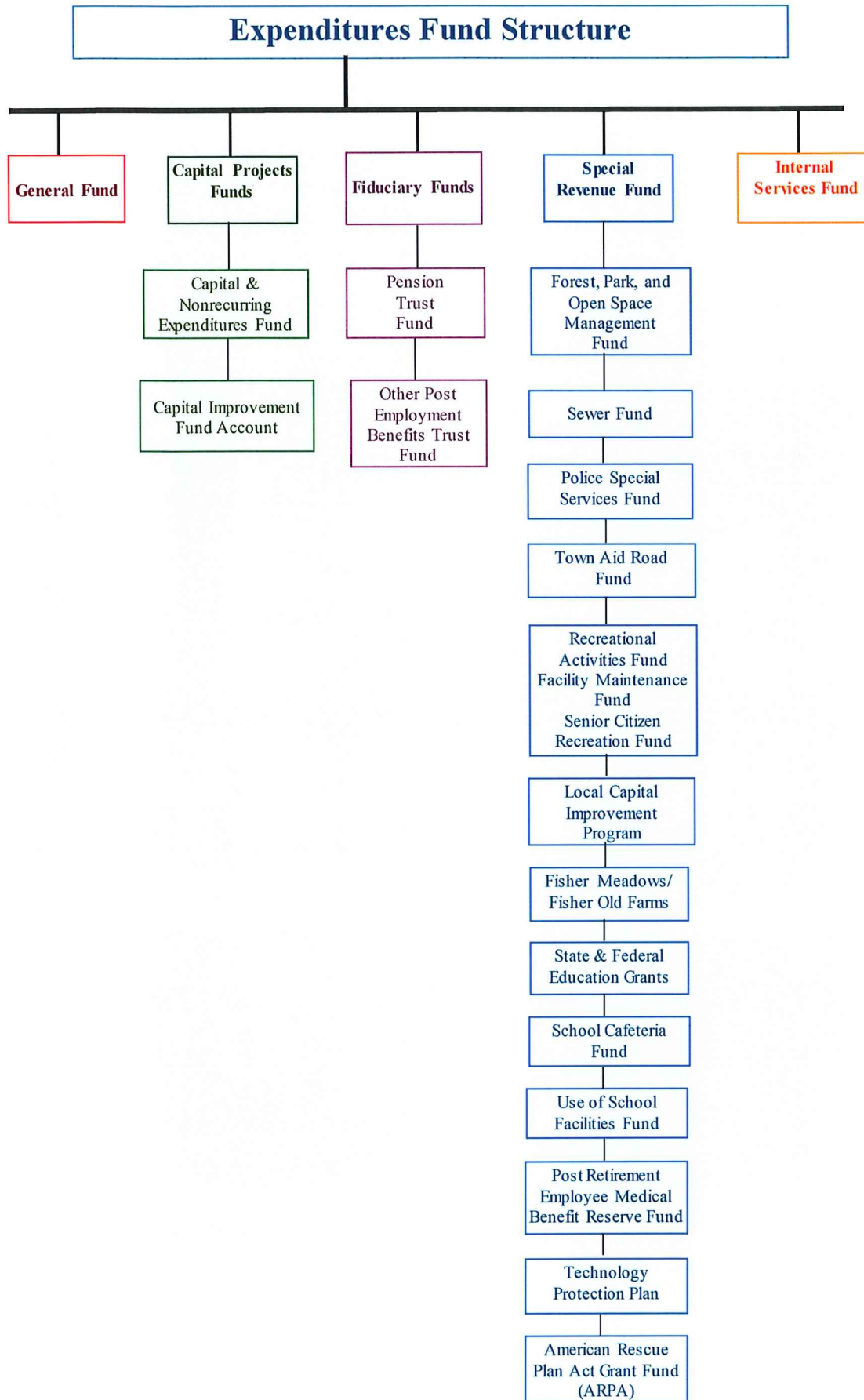
*American Rescue Plan Act Grant Fund:* To account for expenditures for uses of federal funds provided pursuant to the American Rescue Plan Act (ARPA). ARPA funds are intended to provide support to state, local and tribal governments in responding to the COVID-19 public health emergency and its negative impacts.

Internal Services Fund (Appropriated within General and Sewer Special Revenue Funds): The Internal Service Fund is used to account for risk financing activities as allowed by GASB Statement No. 10. The Medical Claims Fund is the Town's only Internal Service Fund. The appropriations for this fund are in the General Fund and Sewer Special Revenue Fund.

### DEPARTMENTAL / FUND RELATIONSHIP

Department	General Fund	Capital Projects Fund	Capital & Non-recurring Fund	Forest Park Manag Fund	Sewer Fund	Police Special Services Fund	Town Road Aid Fund	Recr Activ. Fund	LOCIP Fund	State & Fed. Educ. Fund	School Cafet. Fund	Use of School Facilities Fund	Technology Protection Plan Fund	American Rescue Plan Act Grant Fund
General Government	✓													✓
Public Safety	✓					✓								✓
Public Works	✓	✓	✓	✓	✓		✓	✓	✓					✓
Health & Social Services	✓													✓
Recreation & Parks	✓			✓				✓						✓
Education - Culture	✓													✓
Conserv. & Development	✓													✓
Miscellaneous	✓													
Board of Education	✓	✓								✓	✓	✓	✓	✓
Debt Service	✓													







### Expenditure Section (Tabs C-Q), continued

#### **Basis of Budgeting and Basis of Accounting**

The “basis of budgeting” determines when revenues and expenditures are recognized for the purpose of budgetary control. The “basis of accounting” determines when revenues and expenditures are recognized for the purpose of financial reporting. Avon’s budget is based upon expected cash receipts and disbursements (cash basis), does not budget for depreciation, and Avon’s expenditures may not exceed the appropriation at the object level within the department. The Town uses a hybrid basis of accounting termed “modified accrual” for governmental fund types, including the General Fund, special revenue funds, debt service funds, and capital project funds. For proprietary and fiduciary fund types (trust), full accrual is used and does not include depreciation expense for budgeting and accounting, but fiduciary fund types (custodial) use modified accrual for accounting. Please refer to the Glossary, pages 1 and 2 for full definitions.

#### **5. Capital Improvement Program Section (Tab R)**

This section presents an overview of the Capital Improvement Program, including details of projects to be funded in the fiscal year beginning July 1, 2021. A detailed listing of each Capital Improvement Program project included in the five-year program is published as part of this section. Subsections within the Capital Improvement Program Section are as follows:

- A. Overview
- B. Capital Improvement Program, Project Summary
- C. Capital Improvement Program, Financial Summary by Source
- D. Capital Improvement Program, General Review Requirements by Function

#### **6. Supplemental Data (Tab S)**

The appendix presents supplemental detailed charts, and tables of interest on specific aspects of the budget as follows:

- A. Roadway Improvement Program
- B. Chart of Accounts
- C. Town of Avon Administrative Policy Memoranda
- D. Town of Avon Charter, Ordinances and Selected Regulations
- E. Town of Avon True or Operating Lease Policy
- F. Town of Avon Debt Policy
- G. Town of Avon Investment Policy

#### **7. Glossary**

This section presents definitions of interest on specific aspects of the budget book:

- A. Definition of Terms Used in this Budget

## **GENERAL INFORMATION ABOUT AVON**

The information about Avon, provided below, is designed to give an overview of the community. It is drawn from, and supplemented by, additional information located in the Appendix (Statistical Tables). This information should aid the reader in understanding Avon's form of government, its management structure, and the services provided by the Town Government and Board of Education.

### **Historical Background**

Avon, formerly Northington or North Parish of Farmington, was settled about 1645. In 1830, after the construction and opening of the Towpath Canal, Avon was incorporated as a town and took its name from the Avon River in England. The Town is located approximately ten miles west of metropolitan Hartford and encompasses an area of approximately 23.15 square miles, or 14,454 acres.

### ***Natural Features***

The Town's topography contains many natural features. Trap rock ridges and rolling hills, associated with three significant ridgelines known as Avon Mountain, Pond Ledge, and Huckleberry Hill give Avon its unique character; and, as a result approximately 2,140 acres are on slopes which are greater than 15%. In Avon, approximately 2,520 acres (17%) of the land area is considered wetlands; and 329 acres (2%) is on floodplain soils. The Town benefits from 7 miles of the Farmington River, which flows south through the western portion of Town and then uniquely flows north through the eastern portion of Town. This river and its tributaries create a major aesthetic and recreational opportunity, and also provide a fresh water supply. Additionally, there are significant mapped aquifers which provide a valuable source of groundwater. The Town has a broad expanse of farmland and large areas of upland forest. There are 2,859 acres of land, or approximately 20% of the Town, that are categorized as open space.

### ***Description of Government***

Incorporated in 1830, the Town's first charter was adopted in 1959 and has been amended several times, most recently in 1998. The Charter provides for a Town Meeting, elected Town Council which is the principal legislative body, elected Board of Finance, and an elected Board of Education. It also provides for a Town Manager and Superintendent of Schools as Chief Administrators. Local elections are held every two years in odd-numbered years during the month of November. The Town comprises three voting districts with elections-at-large. The five-member Council takes office January 1st and elects its chairman.

## **SUMMARY OF SERVICES**

### ***Education***

Avon Public School facilities consists of a high school that was constructed in 1957 and updated several times, with the most recent modification and addition completed in 2008; a middle school which had a \$7,100,000 million dollar renovation and addition that was completed in 1994; a grade 5/6 school, Thompson Brook School, which opened in the fall of 2002; and two elementary schools that serve the younger aged children – Pine Grove Elementary School which opened in September 1991 and Roaring Brook Elementary School which was renovated and expanded in 1994. Within Avon, several private nursery schools serve the preschool aged children. The town is also home to Talcott Mountain Science Academy, Farmington Valley Academy Montessori, Reggio Magnet School of the Arts and Avon Old Farms School, a private all boys' school.

Avon is recognized as one of the most outstanding communities for education in the State of Connecticut. A rigorous curriculum, outstanding teachers, and a community invested in high quality

## *Education, continued*

education provide our students with the foundation needed to be successful in their future endeavors. During the 2020-2021 school year, there were 3,135 students enrolled in Avon's five public schools. Avon High School, with just under 1,000 students, is consistently ranked among the most competitive high schools at both the state and national levels. In the graduating class of 2021, Avon Public Schools proudly announced one National Merit Scholarship winner, four National Merit Finalists and 18 Commended Scholars. Avon also remains among the highest scoring districts statewide on the SAT. Students participated in a total of 559 Advanced Placement tests, achieving scores of 4 or 5 on 62% of the exams. 94% of graduates enrolled in an accredited college or university. Niche, an on-line source that provides in-depth profiles on every school and college in America utilizing powerful search and data tools has ranked the community of Avon the third Best Place to Live in CT due in part to its highly rated public schools; giving A+ ratings for both Avon High School and Avon Middle School and A- to Thompson Brook School, Pine Grove School and Roaring Brook School. In the latest edition of US News & World Reports, Avon High School received a score of 95.78 out of 100 and ranked 753 in the National Ranking of all high schools in the nation; 17th in CT.

During the 2020-2021 school year, the Avon Public Schools reopened fully under the guidance and directives from the state of Connecticut related to education during the pandemic, this included students participating in classes both in person and remotely. The 2021-2022 school year saw the Avon Public Schools safely, and fully return all students and staff to in-person learning and extracurricular activities under continued guidance and directives from the state of Connecticut and its executive agencies.

<b>SCHOOL YEAR</b>	<b>PINE GROVE/ ROARING BRK PK-4</b>	<b>THOMPSON BROOK 5-6</b>	<b>AVON MIDDLE 7-8</b>	<b>AVON HIGH 9-12</b>	<b>TOTAL</b>
2016-2017	1,196	497	558	1,024	3,275
2017-2018	1,155	487	556	1,011	3,209
2018-2019	1,169	510	511	952	3,142
2019-2020	1,177	501	526	958	3,162
2020-2021	1,136	503	511	957	3,107
2021-2022	1,143	494	513	956	3,106

**Source: Avon Public Schools**

The gross general fund operating budget for the Avon Public Schools for fiscal year 2021/2022 was \$62,634,303. The Avon Board of Education also administers the Nutrition Services budget of \$993,240; Use of School Facilities budget of \$25,000; and finally, various state and federal grants budgets totaling an estimated \$950,311 for the fiscal year 2021/2022.

## *Recreation and Parks*

The Recreation and Parks Department is responsible for the planning, coordination and general administration of all park and recreation programs. In addition, the Director also administers the use of the Avon Senior Center/Community Room, a public building at Countryside Park and 1,155 acres of active and passive park land in thirteen separate areas.

Avon has five neighborhood parks containing a variety of active recreation facilities. Sycamore Hills Recreation area provides tennis, pickle ball, gaga ball, swimming, picnicking, a playscape, sand volleyball, basketball, a bocce court, and a large event pavilion. Countryside Park offers a building for rental, picnicking, a trail system and fishing. Sperry Park contains four Little League fields (two are lighted) and two entrances to the Farmington Canal Heritage Trail, which is a paved linear trail ideal

## ***Recreation and Parks, continued***

for bicycling, walking, and running. The Huckleberry Hill Recreation Area has an open field and a trail system for walking, mountain biking, and jogging. The Buckingham Road Recreation Area has two all-purpose fields, a regulation baseball field and a fully accessible children's playground.

Alsop Meadows – 56.20 acres. Route 44 and Waterville Road. Access off Waterville Road (Route 10) and adjacent to the Farmington River. A largely undeveloped and unsupervised natural area consisting of woods and open meadows and a trail system. Used for: walking, hiking, jogging, cross country skiing and canoeing (launch available). Garden Plot Program is located here and it is part of the Forestry Management Program.

Fisher Meadows is the Town's community-wide park, containing 250 acres, with approximately 35 acres of active recreation facilities, including 14 multipurpose fields, used mostly for soccer and lacrosse, and two regulation softball fields. Adjacent undeveloped areas in Fisher Meadows, including the 41 acre Spring Lake, provide opportunities for hiking, fishing, non-motorized boating, interpretive nature trails and a car top boat launch on the Farmington River. There is a play area and three covered pavilions. The Town purchased an additional 315 acres adjoining Fisher Meadows in 2002. The intent of this purchase was to preserve open space and provide a limited trail system adjacent to the Farmington River.

In addition to Town-owned facilities, there are many privately owned and operated facilities within Town Boundaries. The Town has three private golf courses, of which two are open to the public. The Farmington River, which passes through Avon, offers a variety of recreational activities such as flat and white-water canoeing, kayaking, and fishing.

## ***Public Library***

The mission of the Avon Free Public Library is to provide all members of our community with a welcoming place that champions the love of reading and lifelong learning, stimulates curiosity, nurtures creativity, offers reliable information resources, unites generations and provides technology, programs and services that enrich, inspire and delight. The Library, originally built in 1982 and expanded in 1997, underwent a major renovation and expansion in 2011/2012, adding 22,000 square feet, a computer lab, a teen room, additional parking and a drive-thru book drop. There is a staff of 40 (8 full-time and 32 part-time), with a collection of 199,693 items, including books, e-books, compact disks, and DVDs.

Annual circulation for fiscal year 2020/2021 was 204,815. The Library has more than 6,250 card holders, or approximately 34% of the Town's population.

The Library is a member of Library Connection, a cooperative regional automated circulation and database system, to which 31 capital region libraries belong. Through this system, over 5.8 million volumes are available to borrowers through inter-library loan. Connecticut also offers statewide reciprocal borrowing, encompassing more than 160 public libraries.

## ***Police Department***

The Avon Police Department has an authorized staff of 43 full-time and 3 part-time employees. The Department has received national accreditation from the Commission on Accreditation for Law Enforcement Agencies and the State of Connecticut since 1993. The Department was most recently reaccredited in March 2020.

The core Department philosophy is *Service to the Community* through a variety of programs including: D.A.R.E. (Drug Abuse Resistance Education) in the schools, Police Cadets, Connecticut Special

### ***Police Department, continued***

Olympics and the Citizens' Police Academy. This philosophy is the guiding principle in all interactions between Department personnel and the community. Additionally, the Department has an assigned Community Relations Officer who is involved in numerous community outreach programs throughout the year, including "Coffee with a Cop" business visits and neighborhood events to educate and enlist residents in crime prevention measures and personal safety awareness. A piece of this principle has been a concerted effort to increase patrols in neighborhoods and business districts. The Department has a Physical Security Assessment Unit, trained to assess and provide safety and security input and suggestions to Avon schools and municipal facilities. The Department also has a School Resource Officer (SRO) assigned to the town's schools. The SRO, located at Avon High School during the school week, communicates and works with faculty and students to maintain a safe learning environment. The Department also participates in the Juvenile Review Board, offering youthful offenders, who meet certain Board-established criteria, an alternative to the State criminal court system. The deployment of body-worn cameras for all officers and cruiser dashboard cameras is scheduled for March of 2022.

Officers are continually trained in highly specialized, multi-faceted matters including, but not limited to, Ethics, Crisis Intervention, High Visibility Traffic Enforcement, Diversity and Inclusion, Fair and Impartial Policing, Cultural Awareness, Implicit Bias, Citizens with Special Needs, Active Shooter, Firearms and Legal Updates. Department staff continue to train in the De-Escalation through Confidence program that emphasizes alternative verbal and physical techniques as opposed to traditional weapon deployment. Select officers also received FEMA training in crowd management methods as part of a Capital Region Chiefs of Police plan for a regional response to large public disturbances.

Avon Police Officers are the Town's First Responders, and are certified medical response technicians. All patrol vehicles are equipped with Automated External Defibrillators (AED) and Naloxone, an opioid antagonist/overdose reversal drug. The Patrol Division has a Bicycle Patrol Unit equipped with a portable AED. The Patrol Division actively participates in many regional programs such as the North Central Municipal Accident Reconstruction Squad, the Crisis Negotiations Team and the North Central Emergency Service Team (also known as SWAT). Several Officers are specially trained Drone Operators who are available to assist in regional Drone operations such as search and rescue/recovery and accident investigations. The Department has an Officer trained and certified as a State of Connecticut Commercial Vehicle Safety Alliance truck inspector to enhance truck safety on our roads.

### ***Fire Department***

The Avon Volunteer Fire Department, Inc. provides fire suppression and prevention, life safety and rescue support as well as other emergency community support to the citizens of the Town of Avon. The Fire Department maintains four fire stations located throughout town as well as 19 pieces of fire apparatus. Stations are located on Darling Drive, Secret Lake Road, West Avon Road and Huckleberry Hill Road. There are currently 65 active firefighters, 7 fire police, 16 administrative members, 21 explorers, 10 active veterans, 22 senior veterans, 31 lifetime members and 17 honorary members. East and West Main Streets are completely served by hydrants within the business area and the Town's fire protection ISO rating is 4, 4b. The Department's active fire prevention program has helped to keep the number of structure fires in town at a minimum. All members of the Department are purely volunteer and are trained to the highest available levels.

### ***Health Department***

The Farmington Valley Health District (FVHD) is the local health department that provides public health services to Avon residents. This work includes promoting health programs and policies that support good health; preventing disease outbreaks and conditions that give rise to poor health; and protecting residents from health threats and public health emergencies. FVHD has been the agency leading and coordinating the towns' pandemic response efforts. Avon's Town Manager and a citizen of the Town are active members of the Health District Board. Avon's Town Manager has been the Chair of the Health District Board since September 2019.

### ***Planning Department***

The Department of Planning and Community Development is comprised of the divisions of Planning and Zoning, Enforcement and Environmental Compliance, Building Inspection and Fire Prevention.

The Department is responsible for the review of all new commercial and residential construction projects, which includes providing professional and technical assistance to the Town's three land use agencies (Planning and Zoning Commission, Inland Wetlands Commission, and Zoning Board of Appeals); permitting and inspection of all approved projects in accordance with applicable zoning, building, and fire codes; as well as a comprehensive program of inspection aimed at fire prevention.

Under the direction of the Director of Planning, the development process, which often begins with an application to one of the Town's three land use regulatory agencies, is coordinated with permitting and inspection. Additional efficiencies are realized through cross training in each division. The Director of Planning also serves as the Zoning Enforcement Officer and is also a Certified Floodplain Manager and CT Licensed Arborist. The Planning and Community Development Specialist is also a certified Zoning Enforcement Official. The Fire Marshal also serves as the Town's Emergency Management Director. Staff coordination is facilitated by regular staff meetings and discussions.

### ***Finance Department***

The Finance Department is composed of three divisions: Accounting, Assessment, and Revenue Collection. Under the guidance of the Director of Finance, this department coordinates the day-to-day financial management of Town funds. The Finance Director coordinates preparation of the Annual Comprehensive Financial Report, and coordinates the bond rating and sale process. The Division of Accounting is mainly responsible for maintaining and controlling the financial records of the Town, and processes all payments for Town expenditures. Accounting also prepares various reports and schedules in preparation of the Annual Comprehensive Financial Report, provides cash management, manages banking relationships, and processes payroll for Town employees. The Division of Assessing is responsible for preparation of the Town's annual Grand List, which is a complete listing of all properties in Town, listing its ownership and assessed value as of October 1<sup>st</sup> of each year. The Collector of Revenue is responsible for collection of all taxes, special assessments, sewer use fees and other Town revenues. These collections are governed by State Statute and local ordinance. The Finance Department also disseminates fiscal information to various Town departments, Boards and Commissions, the State of Connecticut, and the United States Bureau of the Census.

### ***Public Works***

The Avon Public Works Department (DPW) consists of 24 full time employees and 5 part time employees and is divided into five divisions: Administration, Roadways, Building & Grounds, Machinery & Equipment and Solid Waste.

## ***Public Works, continued***

The Administration Division is responsible for the direct oversight of all divisions. It manages the day to day operations of the department and capital projects as directed by the Town Manager. It is also responsible for both short term and long range budget development and administration.

The Roadways Division is responsible for the improvements and maintenance of 112.37 miles of accepted roads, which includes 85 miles of storm sewers with approximately 5,005 catch basins.

The Building & Grounds Division is responsible for the maintenance of 21 buildings totaling 139,849 square feet. It is also responsible for the grounds maintenance of 1,217 acres of park, athletic fields and open space.

The Machinery & Equipment Division is responsible for the maintenance of 176 pieces of various types of motorized equipment which are assigned to numerous Town departments including Board of Education and Volunteer Fire Department.

The Solid Waste Division provides multiple recycling opportunities to residents so that we may continue to successfully surpass the State mandate to recycle 25% of municipal solid waste. Recycling opportunities include: The CT. Mattress Recycling Program, Electronics Recycling (E-Waste), Single Stream Recycling, the compaction of contents within containers and a paint recycling program. 1,211 tons of waste, and 337 tons of single stream recycling were transported to the Materials Innovation and Recycling Authority (MIRA) in fiscal year 2020/2021 at an annual cost of \$142,315. Another 11,935 tons of waste is picked up privately at curb side and disposed of at the MIRA facility and paid for by individual and commercial customers. The Town does not provide solid waste curbside collection services. Residents either contract with a private refuse collector or bring the waste directly to the landfill. Of the Town's approximately 6,993 households, approximately 1,791 (26%) deliver refuse directly to the transfer station for transport to the MIRA plant in Hartford.

## ***Sewers***

The Town of Avon is served by a combination of individual septic disposal systems and public sewers. The Town has no treatment facility of its own, but instead contracts with the neighboring towns of Canton, Farmington and Simsbury for treatment of sewage effluent. Approximately 54% of the properties in Town are served by public sewers; 2,460 in the Farmington Sewer Shed, 1,712 in the Simsbury Sewer Shed and 127 in the Canton Sewer Shed. The contractual capacity of the Farmington Sewer Shed is 725,000 gallons per day, of which approximately 69% is currently utilized. The contractual capacity of the Simsbury Sewer Shed is 980,000 gallons per day, of which 55% is currently utilized. The contractual capacity of the Canton Sewer Shed is 50,000 gallons per day, of which 52% is currently used. The Canton, Farmington and Simsbury Treatment Plants are licensed by the State of Connecticut.

The Town of Farmington has completed construction of a significant upgrade and expansion of their sewage treatment plant. Avon's share in the cost of this expansion has been finalized and we made our first of 20 annual payments of approximately \$465,000 per year in 2020.

The Town of Simsbury completed an upgrade and expansion of the Simsbury Water Pollution Control plant in fiscal year 2007/2008. The final cost for the upgrade and expansion was \$26,840,083. The amount was reduced by Federal and State grants to \$21,037,216. The Town of Avon is responsible for 23.2% of the low-interest (2%) loan provided by the State of Connecticut. Monthly payments averaging \$23,093.32 will be made through September 30, 2027.



## *Sewers, continued*

The Town maintains approximately 92.02 miles of gravity and pressure sanitary sewer lines with four pumping stations. Expansion of mainline sewers are generally paid for by those that benefit from new sewers through special benefit assessments. Capital Improvements to the existing system are generally funded from fund balance resulting from connection charges and the sewer use fee. Maintenance of the system and treatment of effluent is also paid for by users through the sewer use fee. We revised the sewer billing program in 2021 by initiating a water-use basis for single family residential accounts on public water and splitting the annual charge into two installments: one in April and the other in October. Commercial accounts continue to be charged based upon the amount of water consumed by the facility.

In addition to sanitary sewers, the Town also maintains an estimated 85 miles of storm sewers.

## **Utilities**

***Electric:*** Power is delivered by Eversource Energy. Separately, the Town contracts with Constellation NewEnergy, Inc. to supply power to most municipal locations in Town. Those locations not served by Constellation NewEnergy are supplied by Eversource.

## ***Natural***

***Gas:*** Natural gas is supplied by the Connecticut Natural Gas Company.

***Water:*** Water is delivered to residential and commercial customers by the Avon Water Company and the Connecticut Water Company. In July 2017, the Connecticut Water Company finalized its acquisition of the Avon Water Company for approximately \$40.1 million. The transaction was approved by the Public Utilities Regulatory Authority (PURA) on April 12, 2017. The Avon Water Company operates as a wholly owned subsidiary of the Connecticut Water Company. In October 2019, the Connecticut Water Company reached a merger agreement with San Jose Water Group, becoming a wholly-owned subsidiary of SJW.

## **Avon Water Company**

Ten wells provide the Avon Water Company with a safe yield of 4,100 gallons per minute. The company also maintains an emergency connection to the Metropolitan District Commission raw water line running from the Barkhamsted Reservoir to the West Hartford MDC treatment facility.

The 96.30 mile distribution system is interconnected and divided into three pressure areas and serves 4,447 customers in Avon of the 4,869 total customers served. The Company's total storage capacity is 2,780,000 gallons. Fire protection is provided through 608 fire hydrants. The Company maintains 7 booster pump stations in the Hunters Run, Northgate, Country Club Road, Highgate, West Hills Drive, Knoll Lane, and Brian Lane areas. The Fisher Meadows Well built in 2004, is able to pump the approved rate of 2,083 GPM. Completion of this facility increased the water available to Avon customers by approximately 60%.

## **Connecticut Water Company**

### Connecticut Water Company – Collinsville Division

The Collinsville Division of the Connecticut Water Company has a total of 1,962 customers, of which 381 are in Avon. Water is supplied by Metropolitan District Commission's Nepaug Reservoir through the Collinsville Water Treatment Plant on Torrington Avenue and, as well, thru an interconnection with The Avon Water Company on Northington Drive . They have three storage tanks with a combined capacity of 1.4 million gallons. Fire

protection is provided to the Town of Avon through 64 hydrants and 47,320 linear feet of water main.

#### Connecticut Water Company – Unionville Division

The Unionville Division of the Connecticut Water Company has a total of 6,620 customers, of which 675 are in Avon. Water is supplied by wells augmented by connection with the Metropolitan District Commission. Fire protection is provided to the Town of Avon through 95 fire hydrants and 66,489 linear feet of water main.

### **Housing**

Avon continues to be a community which attracts upscale residential development. New single-family homes routinely sell for prices in excess of \$600,000. Commercial development also continues to grow. The Town's preference is for diverse, small-sized companies in specialty manufacturing, financial services, professional management, sales, and consulting.

#### Housing Inventory

<u>Type</u>	<u>Units</u>	<u>Percent</u>
1-4 unit detached	5,121	68%
Condominiums	1,829	25%
Apartments	538	7%
<b>Total Inventory</b>	<b>7,488</b>	<b>100%</b>

Source: Avon Assessor December 2021

#### Owner-Occupied Housing Values

	<u>Condominiums</u>	<u>One Family</u>
	<u>Median</u>	<u>Median</u>
<b>Avon</b>	235,000	500,000
<b>Capitol Region</b>	215,000	340,000

Median Home Sales Prices 1/1/2021 – 12/31/2021

Source: Smart MLS

### **Town Finances**

All governmental funds are accounted for using the modified accrual basis of accounting. Their revenues are recognized when they become measurable and available as net current assets. Available is currently being defined as collected during the current period or expected to be collected within 60 days thereafter.

Expenditures are generally recognized under the modified accrual basis of accounting when the related fund liability is incurred. Exceptions to this general rule include prepaid expenses, which are not recorded, principal and interest on general long-term debt, which are recognized when due, and compensated absences which are accrued and recorded in the general long-term obligations account group. Trust and Custodial Funds are accounted for using the modified accrual basis of accounting for their assets and liabilities.

The annual operating budget for the General Fund is adopted on a basis consistent with Generally Accepted Accounting Principles, except for encumbrances and payroll accruals. The annual operating budgets for the Special Revenue Funds are prepared on a basis consistent with generally accepted accounting principles, except for encumbrances.

## Fund Balances

Avon completed fiscal year 2019/2020 with an Unassigned General Fund Balance of \$12,722,454, or 14.42% of the fiscal year 2019/2020 General Fund expenditures and transfers out of \$88,245,221, not including the State's contribution, and offsetting expenditures for teacher's retirement and OPEB of \$9,052,092. No use of fund balance was budgeted for fiscal year 2019/2020. The adopted fiscal year 2020/2021 budget, however, used \$1.8 million in Unassigned General Fund Balance to maintain a level tax rate. Due to favorable operations in fiscal year 2019/2020, an assignment was placed on fund balance in the amount of \$1.8 million to cover the fiscal year 2020/2021 use of Unassigned General Fund Balance. No use of fund balance is recommended for fiscal year 2021/2022 at this time and the Town is committed to maintaining its compliance with the policy of maintaining Unassigned General Fund Balance reserves at 10% minimum. Other actual fund balances for prior, current, and projected fiscal years are outlined on pages B. 22 – B. 27.

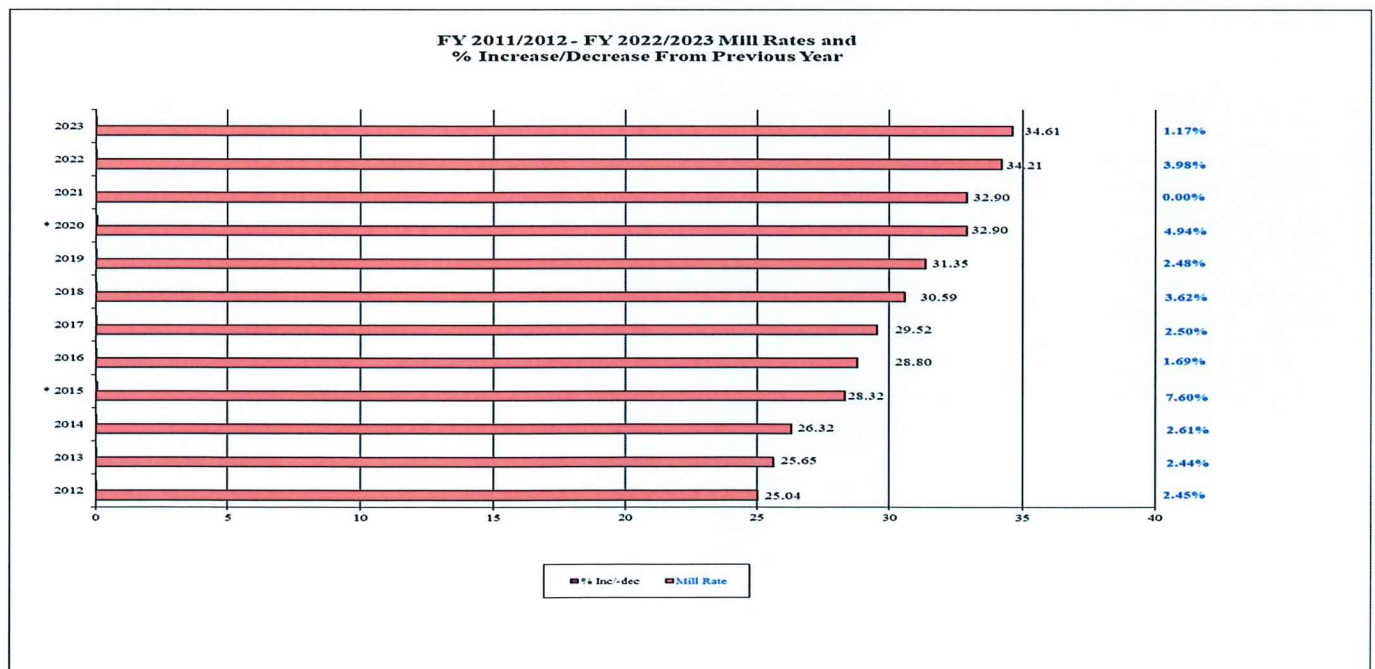
## Debt Service

The Town has budgeted \$2,975,117 for fiscal year 2021/2022 bonded indebtedness, which includes all principal and interest payments. The estimated debt service for fiscal year 2020/2021 (all funds) is \$2,959,750 and, in fiscal year 2019/2020 it was \$3,746,038.

FISCAL YEAR	MILL RATE	GRAND LIST	TAX LEVY **
2023	34.61	\$2,667,772,547	\$92,331,608
2022	34.21	\$2,600,633,032	\$88,967,656
2021	32.90	\$2,573,968,792	\$84,650,673
2020*	32.90	\$2,559,343,136	\$84,202,389
2019	31.35	\$2,615,585,560	\$81,998,607
2018	30.59	\$2,611,809,940	\$79,895,266
2017	29.52	\$2,592,702,830	\$76,536,588
2016	28.80	\$2,577,798,250	\$74,240,590
2015*	28.32	\$2,559,080,530	\$72,473,161
2014	26.32	\$2,688,826,620	\$70,769,917
2013	25.65	\$2,668,107,050	\$68,436,946
2012	25.04	\$2,638,616,860	\$66,070,966
2011	24.44	\$2,618,153,660	\$63,987,675

\* Town-wide revaluation of property

\*\* The Tax Levy represents the budget amount. The assessment ratio is 70% of fair market value, based on the 2018 revaluation of land and buildings.



**TOWN OF AVON**  
**BUDGETED REGULAR FULL TIME POSITIONS 2014-2023**

	Actual 13/14	Actual 14/15	Actual 15/16	Actual 16/17	Actual 17/18	Actual 18/19	Actual 19/20	Actual 20/21	Actual 21/22	Est. 22/23	Proj. 22/23
<b>General Government</b>											
Manager	3.0	3.0	3.0	3.0	3.0	3.0	3.0	3.0	3.0	3.0	3.0
Records & Vital Statistics	2.0	2.0	2.0	2.0	2.0	2.0	2.0	2.0	2.0	2.0	2.0
Town Hall	1.0	1.0	1.0	1.0	1.0	1.0	1.0	1.0	1.0	1.0	1.0
Finance Administration	1.4	1.4	1.4	1.4	1.4	1.4	1.4	1.4	1.4	2.5	2.5
Accounting	2.0	2.0	2.0	2.0	2.0	2.0	2.0	2.0	2.0	3.0	3.0
Assessors	1.0	1.0	1.0	1.0	2.0	2.0	1.0	1.0	1.0	2.0	2.0
Tax Collection	2.0	2.0	2.0	2.0	2.0	2.0	2.0	2.0	2.0	2.0	2.0
Human Resources	2.0	2.0	2.0	2.0	2.0	2.0	2.0	2.0	2.0	2.0	2.0
<i>Total General Government</i>	<i>14.4</i>	<i>14.4</i>	<i>14.4</i>	<i>14.4</i>	<i>15.4</i>	<i>15.4</i>	<i>14.4</i>	<i>14.4</i>	<i>14.4</i>	<i>17.5</i>	<i>17.5</i>
<b>Public Safety</b>											
Police Department	44.0	44.0	44.0	44.0	44.0	44.0	44.0	44.0	44.0	44	44
Fire Marshal										1.0	1.0
Fire Fighting	1.0	1.0	1.0	1.0	1.0	1.0	1.0	1.0	2.0	1.0	1.0
Building Inspection	3.0	3.0	3.0	3.0	3.0	3.0	4.0	4.0	3.0	3.0	3.0
<i>Total Public Safety</i>	<i>48.0</i>	<i>48.0</i>	<i>48.0</i>	<i>48.0</i>	<i>48.0</i>	<i>48.0</i>	<i>49.0</i>	<i>49.0</i>	<i>49.0</i>	<i>49.0</i>	<i>49.0</i>
<b>Public Works</b>											
Administration	4.0	4.0	4.0	4.0	4.0	3.0	3.0	3.0	3.0	3.0	3.0
Highway	8.0	8.0	8.0	8.0	8.0	9.0	9.0	9.0	10.0	10.0	10.0
Landfill	1.0	1.0	1.0	1.0	1.0	1.0	1.0	1.0	0.0	0.0	0.0
Machinery & Equipment	4.0	4.0	4.0	4.0	4.0	4.0	4.0	4.0	4.0	4.0	4.0
Buildings and Grounds	5.0	6.0	6.0	6.0	6.0	6.0	7.0	7.0	7.0	7.0	7.0
Engineering	4.0	4.0	4.0	4.0	4.0	4.0	4.0	4.0	4.0	4.0	4.0
Sewer Collection	1.0	1.0	1.0	1.0	1.0	1.0	1.0	1.0	1.0	1.0	1.0
<i>Total Public Works</i>	<i>27.0</i>	<i>28.0</i>	<i>28.0</i>	<i>28.0</i>	<i>28.0</i>	<i>28.0</i>	<i>29.0</i>	<i>29.0</i>	<i>29.0</i>	<i>29.0</i>	<i>29.0</i>
<b>Social Service</b>											
Social Service	1.6	1.6	1.6	1.6	1.6	0.6	0.6	0.6	1.6	1.5	1.5
<i>Total Social Services</i>	<i>1.6</i>	<i>1.6</i>	<i>1.6</i>	<i>1.6</i>	<i>1.6</i>	<i>0.6</i>	<i>0.6</i>	<i>0.6</i>	<i>1.6</i>	<i>1.5</i>	<i>1.5</i>
<b>Recreation &amp; Parks</b>											
Recreation	2.0	2.0	2.0	2.0	2.0	2.0	2.0	2.0	3.0	4.0	4.0
Parks	1.0	0.0	0.0	0.0	0.0	0.0	0.0	0.0	0.0	0.0	0.0
Community Activity	0.0	1.0	1.0	1.0	1.0	1.0	1.0	1.0	0.0	0.0	0.0
<i>Total Recreation and Parks</i>	<i>3.0</i>	<i>3.0</i>	<i>3.0</i>	<i>3.0</i>	<i>3.0</i>	<i>3.0</i>	<i>3.0</i>	<i>3.0</i>	<i>3.0</i>	<i>4.0</i>	<i>4.0</i>
<b>Education &amp; Culture</b>											
Library	8.0	8.0	8.0	8.0	8.0	8.0	8.0	8.0	8.0	8.0	8.0
<i>Total Education &amp; Culture</i>	<i>8.0</i>	<i>8.0</i>	<i>8.0</i>	<i>8.0</i>	<i>8.0</i>	<i>8.0</i>	<i>8.0</i>	<i>8.0</i>	<i>8.0</i>	<i>8.0</i>	<i>8.0</i>
<b>Planning &amp; Development</b>											
Zoning, Planning, Inland Wetlands	3.0	3.0	3.0	3.0	3.0	3.0	3.0	3.0	3.0	3.0	3.0
<i>Total Planning &amp; Development</i>	<i>3.0</i>	<i>3.0</i>	<i>3.0</i>	<i>3.0</i>	<i>3.0</i>	<i>3.0</i>	<i>3.0</i>	<i>3.0</i>	<i>3.0</i>	<i>3.0</i>	<i>3.0</i>
<b>TOTAL FULL TIME</b>	<b>105.0</b>	<b>106.0</b>	<b>106.0</b>	<b>106.0</b>	<b>107.0</b>	<b>106.0</b>	<b>107.0</b>	<b>107.0</b>	<b>108.0</b>	<b>112.0</b>	<b>112.0</b>

**TOWN OF AVON**  
**BUDGETED REGULAR PART-TIME (51012) POSITIONS 2014-2023**

	Actual 13/14	Actual 14/15	Actual 15/16	Actual 16/17	Actual 17/18	Actual 18/19	Actual 19/20	Actual 20/21	Actual 21/22	Est. 22/23	Proj. 22/23
<b>General Government</b>											
Manager	0.0	0.0	0.0	0.0	0.0	0.0	0.0	0.0	0.0	0.0	0.0
Registrars of Voters	0.0	0.0	0.0	0.0	0.0	0.0	0.0	0.0	0.0	0.0	0.0
Records & Vital Statistics	1.0	1.0	1.0	1.0	1.0	1.0	1.0	1.0	1.0	1.0	1.0
Town Hall	0.0	0.0	0.0	0.0	0.0	0.0	0.0	0.0	0.0	0.0	0.0
Finance Administration	1.0	1.0	1.0	1.0	1.0	1.0	1.0	1.0	1.0	0.0	0.0
Accounting	2.0	2.0	2.0	2.0	2.0	2.0	2.0	2.0	2.0	1.0	1.0
Assessors	2.0	2.0	2.0	2.0	1.0	1.0	2.0	2.0	2.0	0.0	0.0
Tax Collection	1.0	1.0	1.0	1.0	1.0	1.0	1.0	1.0	1.0	1.0	1.0
<i>Total General Government</i>	<i>7.0</i>	<i>7.0</i>	<i>7.0</i>	<i>7.0</i>	<i>6.0</i>	<i>6.0</i>	<i>7.0</i>	<i>7.0</i>	<i>7.0</i>	<i>3.0</i>	<i>3.0</i>
<b>Public Safety</b>											
Police Department	0.0	1.0	1.0	1.0	1.0	1.0	3.0	4.0	4.0	3.0	3.0
Building Inspection	1.0	1.0	1.0	1.0	1.0	1.0	1.0	0.0	2.0	1.0	1.0
Fire Prevention	2.0	2.0	2.0	2.0	2.0	2.0	2.0	2.0	0.0	4.0	4.0
Fire Fighting	1.0	1.0	1.0	1.0	1.0	1.0	1.0	1.0	1.0	1.0	1.0
<i>Total Public Safety</i>	<i>4.0</i>	<i>5.0</i>	<i>5.0</i>	<i>5.0</i>	<i>5.0</i>	<i>5.0</i>	<i>7.0</i>	<i>7.0</i>	<i>7.0</i>	<i>9.0</i>	<i>9.0</i>
<b>Public Works</b>											
Administration	-	1.0	1.0	1.0	1.0	1.0	1.0	0.0	0.0	0.0	0.0
Highway	0.0	0.0	0.0	0.0	0.0	0.0	0.0	0.0	0.0	0.0	0.0
Landfill	4.0	4.0	4.0	4.0	4.0	4.0	4.0	4.0	4.0	4.0	4.0
Machinery & Equipment	0.0	0.0	0.0	0.0	0.0	0.0	0.0	0.0	0.0	0.0	0.0
Buildings and Grounds	0.0	0.0	0.0	0.0	0.0	0.0	0.0	0.0	0.0	0.0	0.0
Engineering	1.0	1.0	1.0	1.0	1.0	1.0	1.0	1.0	1.0	1.0	1.0
Sewer Collection	2.0	2.0	2.0	2.0	2.0	2.0	2.0	2.0	0.0	0.0	0.0
<i>Total Public Works</i>	<i>7.0</i>	<i>8.0</i>	<i>8.0</i>	<i>8.0</i>	<i>8.0</i>	<i>8.0</i>	<i>8.0</i>	<i>7.0</i>	<i>5.0</i>	<i>5.0</i>	<i>5.0</i>
<b>Social Services</b>											
Health	0.0	0.0	0.0	0.0	0.0	1.0	1.0	1.0	0.0	1.0	1.0
Social Service	0.0	0.0	0.0	0.0	0.0	0.0	1.0	1.0	1.0	2.0	2.0
<i>Total Social Services</i>	<i>0.0</i>	<i>0.0</i>	<i>0.0</i>	<i>0.0</i>	<i>0.0</i>	<i>1.0</i>	<i>2.0</i>	<i>2.0</i>	<i>1.0</i>	<i>3.0</i>	<i>3.0</i>
<b>Recreation &amp; Parks</b>											
Recreation	1.0	1.0	1.0	1.0	1.0	1.0	4.0	3.0	2.0	1.0	1.0
Parks	0.0	0.0	0.0	0.0	0.0	0.0	0.0	0.0	0.0	0.0	0.0
Community Activity	2.0	1.0	1.0	1.0	1.0	1.0	1.0	1.0	1.0	1.0	1.0
<i>Total Recreation &amp; Parks</i>	<i>3.0</i>	<i>2.0</i>	<i>2.0</i>	<i>2.0</i>	<i>2.0</i>	<i>2.0</i>	<i>5.0</i>	<i>4.0</i>	<i>3.0</i>	<i>2.0</i>	<i>2.0</i>
<b>Education &amp; Culture</b>											
Library	29.0	29.0	29.0	29.0	30.0	28.0	28.0	35.0	37.0	37.0	37.0
<i>Total Education &amp; Culture</i>	<i>29.0</i>	<i>29.0</i>	<i>29.0</i>	<i>29.0</i>	<i>30.0</i>	<i>28.0</i>	<i>28.0</i>	<i>35.0</i>	<i>37.0</i>	<i>37.0</i>	<i>37.0</i>
<b>Planning &amp; Development</b>											
Zoning, Planning, Inland											
Wetlands	2.0	2.0	3.0	2.0	2.0	2.0	2.0	2.0	3.0	1.0	1.0
<i>Total Planning &amp; Development</i>	<i>2.0</i>	<i>2.0</i>	<i>3.0</i>	<i>2.0</i>	<i>2.0</i>	<i>2.0</i>	<i>2.0</i>	<i>2.0</i>	<i>3.0</i>	<i>1.0</i>	<i>1.0</i>
<b>TOTAL REGULAR PART-TIME</b>	<b>53.0</b>	<b>53.0</b>	<b>54.0</b>	<b>53.0</b>	<b>53.0</b>	<b>52.0</b>	<b>59.0</b>	<b>64.0</b>	<b>63.0</b>	<b>60.0</b>	<b>60.0</b>

**TOWN OF AVON**  
**BUDGETED PART-TIME (51010) AND TEMPORARY PART-TIME (51014) POSITIONS 2014-2023**

	Actual 13/14	Actual 14/15	Actual 15/16	Actual 16/17	Actual 17/18	Actual 18/19	Actual 19/20	Actual 20/21	Actual 21/22	Est. 22/23	Proj. 22/23
<b>51010</b>											
<b>General Government</b>											
Registrars of Voters	4.0	4.0	4.0	4.0	4.0	4.0	4.0	4.0	4.0	4.0	4.0
	4.0	4.0	4.0	4.0	4.0	4.0	4.0	4.0	4.0	4.0	4.0
<b>51014</b>											
<b>General Government</b>											
Records & Vital Statistics	3.0	3.0	3.0	3.0	3.0	3.0	3.0	3.0	3.0	1.0	1.0
Registrars of Voters	66.0	66.0	66.0	66.0	66.0	66.0	66.0	66.0	66.0	40.0	40.0
Assessors	1.0	1.0	1.0	1.0	1.0	1.0	1.0	1.0	1.0	0.0	0.0
Tax Collection	4.0	4.0	4.0	4.0	4.0	4.0	4.0	4.0	4.0	1.0	1.0
<i>Total General Government</i>	74.0	74.0	74.0	74.0	74.0	74.0	74.0	74.0	74.0	42.0	42.0
<b>Public Safety</b>											
Police Department	1.0	1.0	1.0	1.0	1.0	1.0	0.0	0.0	0.0	0.0	0.0
Police Supernumary	2.0	2.0	2.0	2.0	2.0	2.0	0.0	0.0	0.0	0.0	0.0
Fire Prevention	1.0	1.0	1.0	1.0	1.0	1.0	1.0	1.0	1.0	0.0	0.0
Communications	6.0	6.0	6.0	6.0	6.0	6.0	6.0	6.0	6.0	1.0	1.0
<i>Total Public Safety</i>	10.0	10.0	10.0	10.0	10.0	10.0	7.0	7.0	7.0	1.0	1.0
<b>Public Works</b>											
Highway	2.0	2.0	2.0	2.0	2.0	2.0	2.0	2.0	2.0	1.0	1.0
Landfill	1.0	1.0	1.0	1.0	1.0	1.0	1.0	1.0	1.0	0.0	0.0
Buildings and Grounds	4.0	4.0	4.0	4.0	4.0	4.0	4.0	4.0	4.0	4.0	4.0
<i>Total Public Works</i>	7.0	7.0	7.0	7.0	7.0	7.0	7.0	7.0	7.0	5.0	5.0
<b>Recreation &amp; Parks (51013 &amp; 51014)</b>											
Summer Programs	14.0	14.0	14.0	14.0	14.0	14.0	14.0	14.0	15.0	15.0	15.0
Swimming Programs	18.0	18.0	18.0	18.0	18.0	18.0	18.0	28.0	28.0	28.0	28.0
Recreation Activity	11.0	11.0	11.0	11.0	11.0	11.0	11.0	11.0	13.0	13.0	13.0
Parks	3.0	3.0	3.0	3.0	3.0	3.0	3.0	3.0	3.0	0.0	0.0
Community Activity	1.0	1.0	1.0	1.0	1.0	1.0	1.0	1.0	1.0	0.0	0.0
<i>Total Recreation &amp; Parks</i>	47.0	47.0	47.0	47.0	47.0	47.0	47.0	57.0	60.0	56.0	56.0
<b>TOTAL TEMPORARY PART-TIME</b>	142.0	142.0	142.0	142.0	142.0	142.0	142.0	149.0	152.0	108.0	108.0

**Regular Employees Definition:** May be either Classified or Unclassified, Full-Time or Part-Time persons who may be appointed to Town Service either on a continuing basis for an indefinite length of service, or for a fixed term greater than six months in the aggregate.

Regular Full-Time Employees: Scheduled to work at least 37.5 hours per week unless an ordinance or the Town Manager designates at least 40 hours per week.

Regular Part-Time Employees: Scheduled to work less than 37.5 hours or, in the case of certain Police and Public Works employees, as designated by the Town Manager, less than 40 hours per week.

**Temporary Employees Definition:** May be either Classified or Unclassified, Full-Time or Part-Time persons who are appointed to Town Service for a fixed term less than six months in the aggregate.

Temporary Full-Time Employees: Scheduled to work at least 37.5 hours per week or, in the case of certain Police and Public Works Department employees, as designated by the Town Manager, at least 40 hours per week.

Temporary Part-Time Employees: Scheduled to work less than 37.5 hour per week, or in the case of certain Police and Public Works Department employees, as designated by the Town Manager, less than 40 hours per week.

**STATE OF CONNECTICUT MUNICIPAL RANKINGS:  
PER CAPITA/PERCENT OF TOTAL DATA  
(Municipal Fiscal Indicators April 2021 and the Avon Public Schools)**

<b>Year</b>	<b>Titles</b>	<b>Town of Avon Placement out of 169 Towns</b>	<b>Amount</b>	<b>State Average</b>	<b>State Median</b>
2019	Per Capita Income	14	\$71,347	\$44,496	N/A
2019	Median Household Income	12	\$131,130	N/A	\$78,444
2019	Debt Per Capita	122	\$1,076	\$2,639	\$1,800
2019	Net Current Education Exp./Pupil	95	\$17,516	\$17,392	\$17,985
2019	Tax Collection Rates	6	99.6%	98.7%	98.8%
2019	Unemployment Comparison	164	2.5%	3.7%	3.2%
2019-20	Mill Rates	N/A	32.90	N/A	N/A
2019	Adjusted Tax Levy Per Capita	19	\$4,509	\$3,124	\$3,014
2019	Property Tax Revenue as % of Total	27	88.0%	73.4%	78.1%
2019	Equalized Mill Rates	66	22.31	19.89	21.02
2019	Equalized Net Grand List Per Capita	37	\$202,098	\$157,085	\$144,605
2019	Population Density Per Square Mile	58	789.3	736.3	462.4
2019	Population	65	18,276	T: 3,565,287	
2019-20	Net Grand List	N/A	\$2,559,343,136	T: \$379,793,805,533	
2019-20	Equalized Net Grand List	N/A	\$3,656,627,123	T: \$573,542,666,917	

<b>Connecticut Smarter Balanced Assessment (SBA)* CMT &amp; CAPT</b>			<b>Avon</b>			<b>State Average</b>		
		<u>SBA ELA</u>	<u>SBA Math</u>	<u>CMT/CAPT Science**</u>	<u>SBA ELA</u>	<u>SBA Math</u>	<u>CMT/CAPT Science**</u>	
2018-19	Grade 3	77%	77%	n/a	54%	55%	n/a	
2018-19	Grade 4	79%	76%	n/a	55%	53%	n/a	
2018-19	Grade 5	77%	67%	n/a	58%	47%	n/a	
2018-19	Grade 6	77%	73%	n/a	55%	45%	n/a	
2018-19	Grade 7	86%	80%	n/a	56%	46%	n/a	
2018-19	Grade 8	78%	76%	n/a	56%	44%	n/a	
2018-19	Grade 11 CT SAT School Day	84%	73%	n/a	62%	41%	n/a	

\* Beginning in 2014-15 Smarter Balanced replaced the CMT for English Language Arts and Mathematics grades 3-8 and the CT SAT School Day replaced CAPT in 2015-16.

\*\* During the 2017-18 school year Avon students participated in the NGSS Field Test which will replace the Science CMT/CAPT in 2018-2019. The field test did not yield state or district results.



**TOWN OF AVON, CONNECTICUT – ERG A AND CAPITAL REGION TOWNS & CITIES FINANCIAL INDICATORS**

<b>TOWN</b>	<b>2019 Population</b>	<b>2019 Equalized Mill Rate</b>	<b>2019 Tax Collection Rates</b>	<b>2019 General Fund Balance Unassigned</b>	<b>2019 Per Capita Debt \$</b>	<b>2019 Bond Rating</b>
Andover	3,236	23.12	98.4%	1,945,327	613	--
<b>Avon</b>	<b>18,276</b>	<b>22.31</b>	<b>99.6%</b>	<b>11,175,459</b>	<b>1,106</b>	<b>Aaa</b>
Bloomfield	21,211	26.29	98.4%	18,755,892	2,424	Aa2
Bolton	4,884	26.85	98.5%	902,614	2,120	Aa3
Canton	10,254	22.34	99.5%	7,176,725	1,633	Aa2
East Granby	5,140	22.63	99.1%	3,696,954	824	Aa2
East Hartford	49,872	32.06	98.1%	21,947,000	1,246	Aa3
East Windsor	11,668	23.44	98.8%	10,102,364	964	Aa2
Ellington	16,467	22.09	99.4%	1,338,387	1,049	Aa3
Enfield	43,659	22.10	98.0%	25,660,000	2,220	Aa2
Farmington	25,497	19.08	99.7%	15,227,357	2,743	Aaa
Glastonbury	34,482	25.27	99.5%	27,601,660	1,532	Aaa
Granby	11,507	27.08	99.3%	5,929,988	1,268	--
Hartford	122,105	37.60	95.3%	9,652,000	4,476	B1
Hebron	9,504	24.62	97.8%	6,554,970	1,005	--
Manchester	57,584	24.71	98.4%	21,449,000	2,039	Aa1
Marlborough	6,335	24.38	99.3%	4,208,002	2,286	Aa3
Newington	30,014	24.04	99.2%	19,258,000	443	--
Rocky Hill	20,115	22.03	99.5%	5,117,723	2,386	--
Simsbury	25,395	25.65	99.4%	16,460,519	1,386	Aaa
Somers	10,784	17.96	99.1%	7,060,613	934	Aa2
South Windsor	26,162	26.47	99.2%	15,245,581	2,864	Aa2
Suffield	15,814	19.66	98.9%	7,701,353	1,090	--
Tolland	14,618	23.52	98.8%	8,150,176	2,986	--
Vernon	29,359	24.74	98.6%	19,297,219	1,463	Aa2
West Hartford	62,965	26.93	99.3%	26,375,000	2,218	Aaa
Wethersfield	26,008	27.08	99.2%	13,072,824	2,067	Aa2
Windsor	28,733	21.76	99.0%	25,900,614	1,500	--
Windsor Locks	12,854	16.41	97.9%	12,298,343	2,063	Aa1

**ERG A TOWNS**

<b>Avon</b>	<b>18,276</b>	<b>22.31</b>	<b>99.6%</b>	<b>11,175,459</b>	<b>1,076</b>	<b>Aaa</b>
Darien	21,728	10.49	99.7%	25,252,631	2,779	Aaa
Easton	7,521	22.62	98.7%	7,506,363	2,794	--
New Canaan	20,233	12.38	99.5%	28,069,597	5,630	Aaa
Redding	9,116	21.46	98.7%	9,396,307	3,589	Aa1
Ridgefield	24,959	19.34	99.4%	15,350,654	2,585	Aaa
Simsbury	25,395	25.65	99.4%	16,460,519	1,386	Aaa
Weston	10,252	20.51	98.8%	14,552,699	2,430	Aaa
Westport	28,491	11.63	98.8%	25,975,898	3,347	Aaa
Wilton	18,343	19.64	99.2%	15,815,142	4,382	Aaa
Woodbridge	8,750	26.50	99.6%	6,566,843	2,929	Aaa

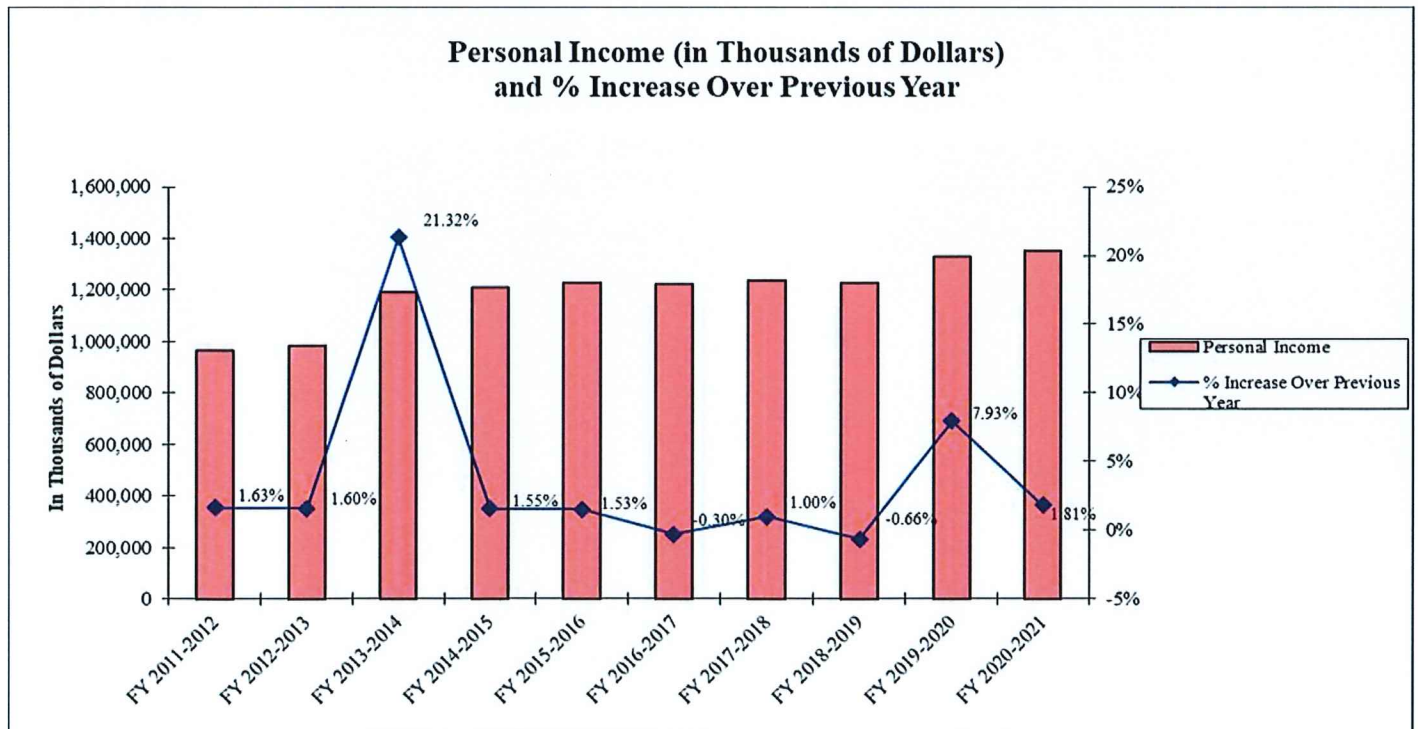
Source: Office of Policy and Management – Municipal Fiscal Indicators FY 2015 – 2019

**TOWN OF AVON, CONNECTICUT**  
**DEMOGRAPHIC AND ECONOMIC STATISTICS**  
**Last Ten Fiscal Years**

Fiscal Year	Population <sup>1</sup>	Personal Income (thousands of dollars) <sup>2</sup>	Per Capita Personal Income <sup>3</sup>	Median Age <sup>3</sup>	Education Level in Years of Schooling <sup>4</sup>	School Enrollment <sup>5</sup>	Unemployment Rate <sup>6</sup>
2012	18,700	966,902	51,706	42.0	16	3,534	5.3%
2013	19,000	982,414	51,706	42.0	16	3,405	5.2%
2014	19,300	1,191,852	61,754	45.1	16	3,379	4.7%
2015	19,600	1,210,378	61,754	45.1	16	3,320	4.1%
2016	19,900	1,228,905	61,754	45.1	16	3,273	3.6%
2017	18,335	1,225,181	66,822	45.1	16	3,289	3.5%
2018	18,352	1,237,475	67,430	45.8	16	3,208	3.4%
2019	18,561	1,229,258	66,228	45.7	16	3,156	2.6%
2020	18,276	1,326,728	72,594	45.8	16	3,146	3.4%
2021	18,932	1,350,741	71,347	45.0	16	3,162	5.3%

Sources:

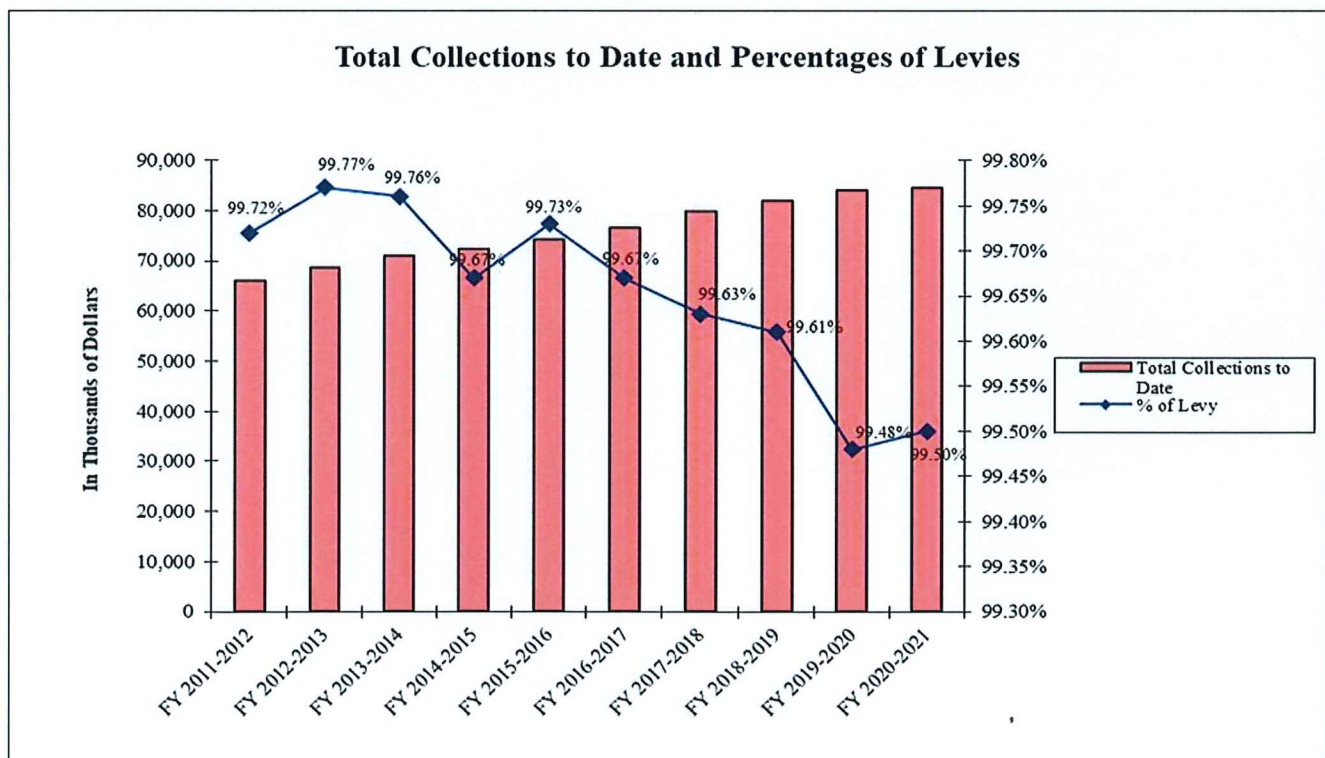
- <sup>1</sup> U.S. Department of Commerce, Bureau of the Census, Quick Facts, Avon, CT. Census April 1, 2020
- <sup>2</sup> Formula of Population times Per Capita Personal Income, divided by one thousand
- <sup>3</sup> U.S. Department of Commerce, Bureau of the Census, Quick Facts, Avon, CT
- <sup>4</sup> AdvanceCT State Profile
- <sup>5</sup> U.S. Department of Commerce, Bureau of the Census, Quick Facts, Avon, CT  
2015-2019 Census Estimates: percentage of Avon population with Bachelor's Degree or higher is 66.2%
- <sup>6</sup> Town of Avon, Board of Education
- <sup>7</sup> State of Connecticut, Department of Labor



**TOWN OF AVON, CONNECTICUT**  
**PROPERTY TAX LEVIES AND COLLECTIONS**  
**Last Ten Fiscal Years**  
**(In Thousands)**

Fiscal Year	Taxes Levied for the Fiscal Year	Collections Within the Fiscal Year of the Levy			Total Collections to Date	
		Amount	Percentage of Levy	Collections in Subsequent Years	Amount	Percentage of Levy
2012	66,262	66,073	99.72%	134	66,207	99.92%
2013	68,687	68,528	99.77%	85	68,613	99.89%
2014	71,181	71,014	99.76%	81	71,094	99.88%
2015	72,652	72,412	99.67%	145	72,558	99.87%
2016	74,538	74,333	99.73%	104	74,437	99.86%
2017	76,942	76,689	99.67%	109	76,798	99.81%
2018	80,215	79,920	99.63%	135	80,055	99.80%
2019	82,409	82,088	99.61%	112	82,200	99.75%
2020	84,558	84,122	99.48%	114	84,236	99.62%
2021	85,007	84,585	99.50%	N/A	84,585	99.50%

Source: Town Assessor's Office, Collector of Revenue and Finance Office

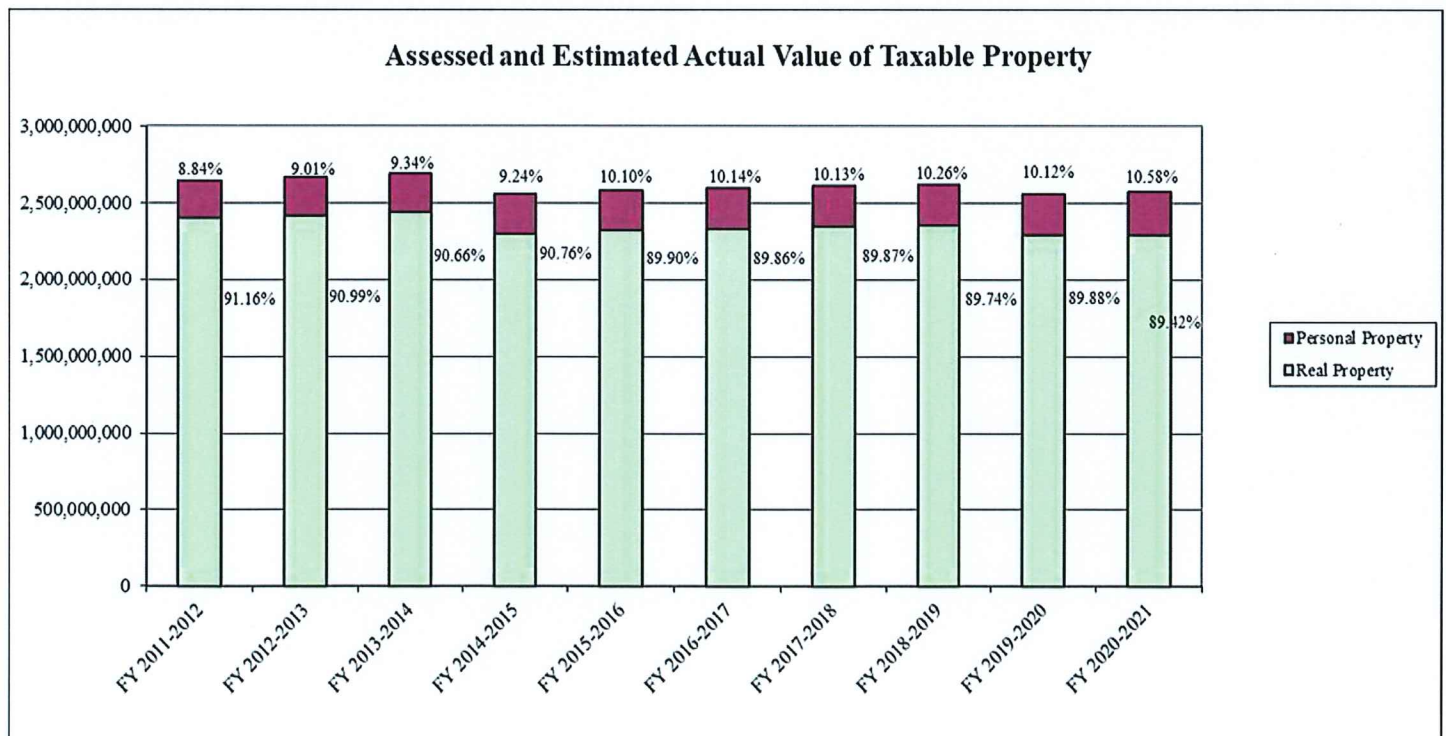


**TOWN OF AVON, CONNECTICUT**  
**ASSESSED AND ESTIMATED ACTUAL VALUE OF TAXABLE PROPERTY**  
**Last Ten Fiscal Years**

Fiscal Year	Real Property		Personal Property	
	Residential Property	Commercial Property	Motor Vehicles	Other
2012	2,082,821,950	318,054,740	161,455,980	76,284,190
2013	2,099,240,690	319,617,200	173,638,190	75,610,970
2014	2,116,947,550	323,533,960	169,534,790	78,810,320
2015	1,975,267,600	325,431,330	175,775,500	82,606,100
2016	1,992,524,590	327,845,890	178,142,700	83,561,770
2017	2,000,794,600	329,328,350	176,244,430	86,335,450
2018	2,013,787,610	330,070,100	178,545,800	89,406,430
2019	2,021,499,800	329,276,340	175,759,330	89,050,090
2020	1,956,003,078	332,558,398	180,813,340	89,968,320
2021	1,959,846,474	333,915,378	180,714,960	98,491,980

Source: Town Assessor's Office

Note: By state law, property is assessed at 70% of actual value with periodic revaluation of real property.



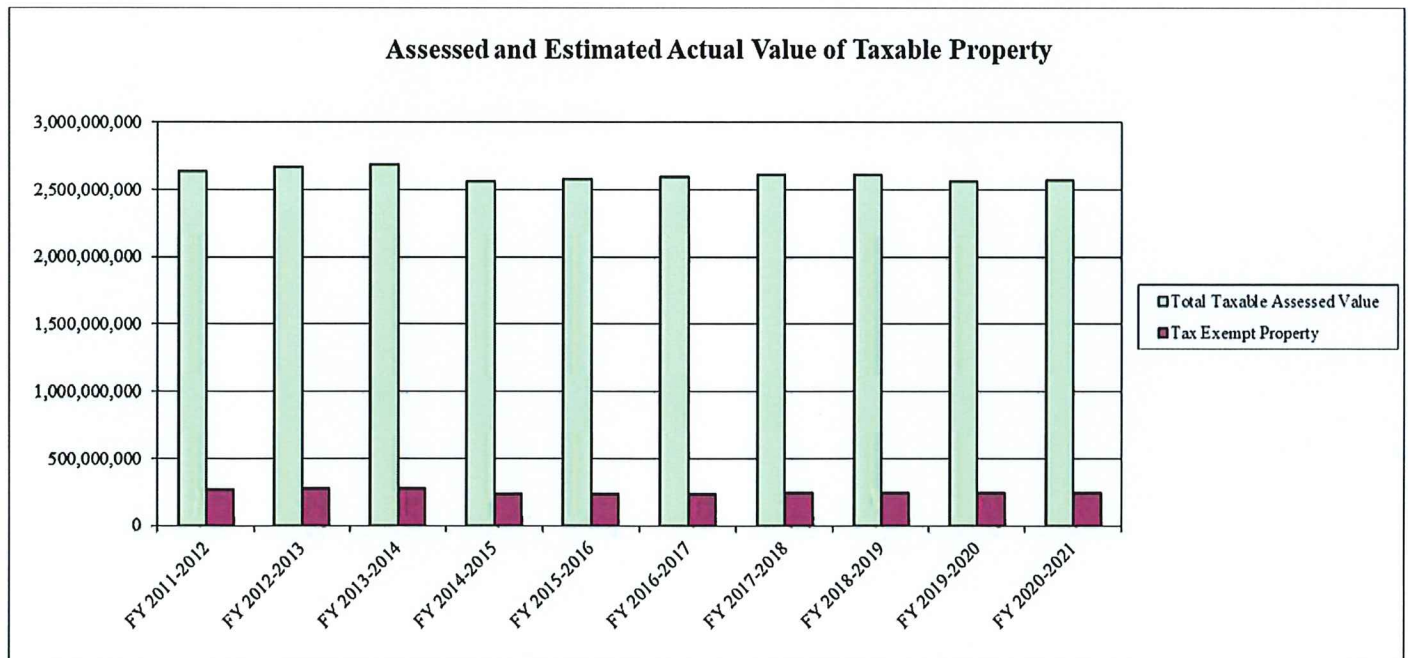


**TOWN OF AVON, CONNECTICUT**  
**ASSESSED AND ESTIMATED ACTUAL VALUE OF TAXABLE PROPERTY**  
**Last Ten Fiscal Years**

<b>Fiscal Year</b>	<b>Tax Exempt Property</b>	<b>Total Taxable Assessed Value</b>	<b>Total Direct Tax Rate</b>	<b>Estimated Actual Taxable Value</b>	<b>Assessed Value as a Percentage of Actual Value</b>
2012	271,385,060	2,638,616,860	25.04	3,742,718,950	70.5%
2013	279,639,180	2,668,107,050	25.65	3,747,341,362	71.2%
2014	281,023,970	2,688,826,620	26.32	3,697,904,084	72.7%
2015	240,650,750	2,559,080,530	28.32	3,655,829,328	70.0%
2016	240,632,240	2,582,074,950	28.80	3,786,173,057	68.2%
2017	240,552,120	2,592,702,830	29.52	3,812,798,280	68.0%
2018	241,507,800	2,611,809,940	30.59	3,785,231,800	69.0%
2019	241,516,850	2,615,585,560	31.35	3,763,432,460	69.5%
2020	241,529,423	2,559,343,136	32.90	3,656,204,480	70.0%
2021	241,454,033	2,572,968,792	32.90	3,728,940,280	69.0%

Source: Town Assessor's Office

Note: By state law, property is assessed at 70% of actual value with periodic revaluation of real property.



# TOWN OF AVON, CONNECTICUT

## PRINCIPAL TAXPAYERS

### Current Year and Nine Years Ago

Taxpayer	2021			2012		
	Taxable Assessed Value	Rank	% of Net Taxable Assessed Grand List	Taxable Assessed Value	Rank	% of Net Taxable Assessed Grand List
CL&P, a/k/a Eversource	\$ 21,928,130	1	0.84%	\$ 12,541,520	4	0.48%
Avon Town Center	17,962,430	2	0.69%			
Connecticut Water Company*	16,887,750	3	0.65%	9,513,650	8	0.36%
Avon 46 LLC***	15,984,540	4	0.61%	13,901,020	1	0.53%
Two Fifty-Five West Main LLC	14,651,339	5	0.56%	12,652,020	3	0.48%
Avon Mill LLC	14,436,449	6	0.55%	13,647,330	2	0.52%
Avon Marketplace Investors	13,816,530	7	0.53%	10,813,240	5	0.41%
Nod Brook LLC	13,309,030	8	0.51%			
KRE-BSL Husky Avon LLC (River Ridge)	9,786,300	9	0.38%			
AD1AvonHotels LLC ** (Marriott)	9,414,965	10	0.36%			
Ensign Bickford Realty Corp.				10,687,800	6	0.41%
Family Wellness Center				8,895,050	10	0.34%
Riverdale Farms LLC				9,973,030	7	0.38%
Connecticut On-Line Computer				9,333,610	9	0.35%
<b>Total</b>	<b>\$148,177,463</b>		<b>5.69%</b>	<b>\$111,958,270</b>		<b>4.26%</b>

\* Formerly Avon Water Company

\*\* Formerly BRE Apex Property Owner LLC

\*\*\*Formerly GAIA Avon Place LLC

Source: Town Assessor's Office

# TOWN OF AVON, CONNECTICUT

## PRINCIPAL EMPLOYERS

### Current Year and Nine Years Ago

Employer	2021			2012		
	Employees	Rank	% of Total Town Employment	Employees	Rank	% of Total Town Employment
Town of Avon/BOE	559	1	5.84%	559	1	6.99%
Avon Health Center, Inc.	207	2	2.16%	216	5	2.70%
Women's Health USA	183	3	1.91%	186	7	2.32%
Big Y Supermarket	166	4	1.73%	195	6	2.44%
Apple Health Care, Inc.	147	5	1.54%	216	4	2.70%
O.F.S. Fitel LLC	142	6	1.48%	177	8	2.21%
Legere Group	136	7	1.42%	155	9	1.94%
Wal-Mart	134	8	1.40%	220	3	2.75%
ORAFOL (formerly Reflexite Tech Center)	134	9	1.40%	91	10	1.14%
Connecticut On-Line Computer Center (COCC)	72	10	0.75%	330	2	4.12%
	<b>1,880</b>		<b>19.84%</b>	<b>2,345</b>		<b>29.31%</b>

Source: Town of Avon, Official Statements



**TOWN OF AVON, CONNECTICUT  
OPERATING INDICATORS BY FUNCTION/PROGRAM**

<b>Departments</b>	<b>2021</b>	<b>2020</b>	<b>2019</b>	<b>2018</b>	<b>2017</b>
<u>General Government</u>					
Marriage Licenses Issued	91	83	103	124	122
Birth Certificates Issued	187	136	154	146	142
Death Certificates Issued	131	218	211	228	221
<u>Boards and Agencies</u>					
Registered Voters	12,953	13,267	12,996	12,651	12,526
Elections and Referenda	1	1	5	2	2
<u>Planning and Development</u>					
Building Permits Issued	2,311	1,836	1,789	1,749	618
Building Inspections Conducted	2,812	2,346	2,814	2,563	2,026
Value of Building Permits	38,912,962	41,578,462	31,559,903	33,736,397	23,065,385
<u>Public Safety</u>					
Arrests	74	106	187	214	164
Parking Violations	1	0	0	0	0
Traffic Violations	373	956	727	1,478	426
Emergency Responses	1,723	1,813	1,940	1,831	1,821
Fires Extinguished	38	43	41	31	45
Inspections/Fire Prevention	440	237	292	348	388
Calls For Service	12,867	13,922	16,593	19,464	16,126
Citations Issued	283	437	564	948	380
<u>Public Works</u>					
Miles of Roads Maintained	111	111	111	110	110
Refuse Collected (tons per year)	730	653	650	660	670
Recyclables Collected (tons per year)	337	388	375	448	418
<u>Parks and Recreation</u>					
Total Park Reservations	3,020	3,817	4,017	3,965	3,652
Total Day Camp Registrations	528	141	457	474	499
Total Swim Memberships	513	357	426	373	417
Pool Attendance	14,473	14,022	14,821	13,189	13,627
<u>Public Libraries</u>					
Volumes in Collection	199,693	191,571	195,637	195,684	153,962
Items Circulated	204,815	212,594	225,318	258,724	285,596
<u>Human Services</u>					
Senior Mini-Bus Trips (Dial-A-Ride)	1,618	2,323	2,971	2,708	2,205
Households Provided Energy Asst.	107	129	143	131	129
Households Provided Food Bank Asst.	116	113	130	121	110
<u>Education</u>					
Number of Schools	5	5	5	5	5

**TOWN OF AVON, CONNECTICUT  
OPERATING INDICATORS BY FUNCTION/PROGRAM**

<b>Departments</b>	<b>2016</b>	<b>2015</b>	<b>2014</b>	<b>2013</b>	<b>2012</b>
<u>General Government</u>					
Marriage Licenses Issued	122	114	115	114	87
Birth Certificates Issued	140	99	128	99	73
Death Certificates Issued	189	191	176	191	120
<u>Boards and Agencies</u>					
Registered Voters	11,590	11,231	11,272	11,981	11,824
Elections and Referenda	4	3	2	2	3
<u>Planning and Development</u>					
Building Permits Issued	700	752	604	567	617
Building Inspections Conducted	2,282	2,387	2,249	2,404	2,171
Value of Building Permits	32,967,887	35,540,625	42,734,952	52,928,314	34,205,274
<u>Public Safety</u>					
Arrests	219	292	180	280	280
Parking Violations	1	5	4	14	12
Traffic Violations	1,175	1,166	812	1,554	1,635
Emergency Responses	1,847	1,673	1,780	2,009	1,603
Fires Extinguished	38	45	45	32	7
Inspections/Fire Prevention	256	451	439	381	381
Calls For Service	21,053	19,646	15,125	12,343	18,638
Citations Issued	659	917	586	932	1,293
<u>Public Works</u>					
Miles of Roads Maintained	110	110	106	108	108
Refuse Collected (tons per year)	700	746	756	782	862
Recyclables Collected (tons per year)	413	421	554	481	504
<u>Parks and Recreation</u>					
Total Park Reservations	4,032	3,422	1,758	1,826	1,886
Total Day Camp Registrations	495	452	531	519	539
Total Swim Memberships	358	360	371	382	443
Pool Attendance	13,717	12,949	12,375	9,748	12,430
<u>Public Libraries</u>					
Volumes in Collection	124,772	122,367	117,374	94,978	96,440
Items Circulated	299,743	291,256	295,590	290,058	208,132
<u>Human Services</u>					
Senior Mini-Bus Trips (Dial-A-Ride)	2,535	2,682	2,494	2,903	2,647
Households Provided Energy Asst.	78	89	80	76	43
Households Provided Food Bank	110	127	127	114	106
<u>Education</u>					
Number of Schools	5	5	5	5	5

# TOWN OF AVON, CONNECTICUT

## CAPITAL ASSET STATISTICS BY FUNCTION/PROGRAM

June 30, 2021

	2021	2020	2019	2018	2017	2016	2015	2014	2013	2012
<u>Public Safety</u>										
Police Stations	1	1	1	1	1	1	1	1	1	1
Fire Stations	4	4	4	4	4	4	4	4	4	4
Police Vehicles	19	20	20	20	23	23	23	23	28	28
Fire Vehicles	15	17	15	18	13	14	14	14	13	13
<u>Public Works</u>										
Miles of Town Roads	111	111	111	111	111	111	111	111	108	108
Streetlights	795	795	795	795	795	795	781	781	828	828
Traffic Signals	21	21	21	21	22	22	22	22	18	18
Public Works Vehicles	33	31	32	32	32	31	31	31	30	33
<u>Recreation &amp; Parks</u>										
Acreage (Parks Only)	1,167	1,167	1,155	1,155	1,155	1,155	1,155	1,155	1,155	1,155
Parks and Greens	14	14	14	14	14	14	14	14	14	14
Athletic Fields (incl. BOE)	36	36	30	30	30	30	30	30	30	30
Swimming Pools	2	2	2	2	2	2	2	2	2	2
<u>Public Libraries</u>										
Libraries	1	1	1	1	1	1	1	1	1	1
<u>Human Services</u>										
Senior Center	1	1	1	1	1	1	1	1	1	1
<u>Education</u>										
Schools	5	5	5	5	5	5	5	5	5	5
<u>Water</u>										
Fire Hydrant Rentals	765	767	771	765	765	764	761	748	721	721
<u>Sewer</u>										
Sanitary Sewers (Miles)	92.1	91.4	91.4	91.98	90.1	90.1	89.4	88	88	77.39
Storm Sewers (Miles)	85	85	85	85	85	85	85	85	85	75

Source: Various Town Departments