



## Community Assets & Activities

- Three Championship Golf Courses
- Farmington Valley Arts Center
- Sycamore Hills Recreation Area
- Fisher Meadows Recreation Area
- The scenic Farmington River
- Nearly 20 miles of maintained trails, including a section of the Farmington Valley Greenway



- Pickin' Patch - a family farm since 1666
- Historical sites of interest
  - The Living Museum
  - The Derrin House
  - Pine Grove School House
- Home to the First Company Governor's Horse Guard
- Myriad opportunities for fine dining and shopping
- Something for everyone!



Brandon Robertson

Town Manager

Town of Avon

60 West Main Street

Avon, CT 06001

(860) 409-4300

[www.town.avon.ct.us](http://www.town.avon.ct.us)



# WELCOME TO AVON



*The Gateway  
Community to the  
Farmington Valley*

*Rated the #1 place to live  
in the Capitol Region by  
Hartford Magazine  
(2010 & 2011)*

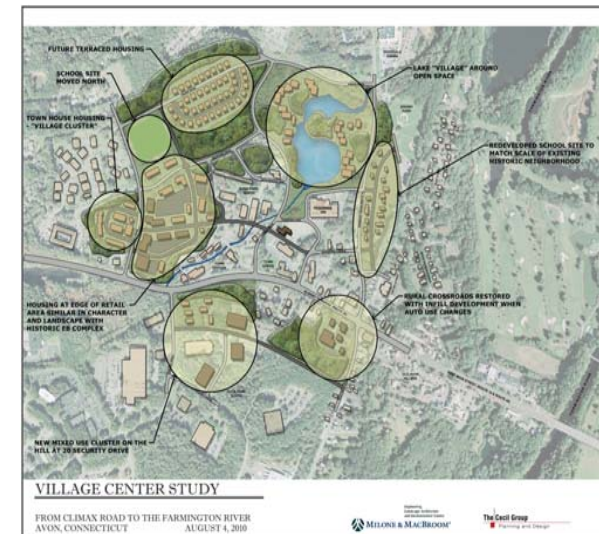
## Residential Information

- 22.6 square miles
- 18,098 residents
- 7,000 homes: from apartments to luxury custom designed properties



## Growth and Development

- Continuous Grand List Growth
- Averaging 18 to 24 new home starts every year
- 100+ approved sites, ready for development; more sites under consideration
- Avon Park North - planning stages for 1.2 million square feet of mixed use





# Education

## Avon Public Schools



In 2011, Avon High School was ranked 281 nationwide by US News - one of only five in the state to be ranked in the Top 500.

## Avon Old Farms School for Boys



Offering top notch facilities, arts, athletics, and curricula to 400 boys in grades 9-12 in a boarding/day school setting since 1927.

## Other Education Opportunities

### • Talcott Mountain Science Center

Offering hands-on, learning experiences in science, math and technology.

### • Farmington Valley Academy Montessori

An education characterized by intellectual rigor combined with personal warmth.

### • Reggio Magnet School of the Arts

Preschool to third grade program focused on experiential learning; site plan has been approved for a new CREC school.

# Economy

Avon has evolved into a full service community with a varied tax base that promotes economic diversity. Major industries with headquarters or divisions located in Avon include:

- Old Castle
- Connecticut On-Line Computer Center
- Coupons, Inc.
- Ironwood Capital Management
- Petroleum Meter and Pump
- Magellan Health
- R.R. Donnelley, Inc.
- Legere Group, Ltd.
- O.F.S. Fitel LLC (formerly Lucent Technologies)
- Reflexite Film Fibers, Inc.



Several major insurance-related companies are also located in Avon including:

- Women's Health USA
- AUL Reinsurance Management
- Ballentine Capital Management, Inc.
- Odyssey America Reinsurance
- Apple Health Care, Inc.
- Adams and Knight

Thanks to a strong commercial tax base, Avon enjoys one of the lowest equalized mill rates in the Capitol Region.

# Business

Approximately 875 businesses operate in the Town of Avon. The main business corridor runs east to west along Route 44 between West Hartford to the east and Canton to the west.

A stated goal in Avon's Plan of Conservation and Development is to: "provide opportunities for new industries to find attractive, well serviced lots with good access to the region and to provide a positive environment for local industries to prosper and expand in Town."

*Live,*



*Work,*



*And Play!*



# Government

The Town of Avon operates under a Council-Manager form of government. Voters elect a five member Town Council. The Town Council appoints a Town Manager to serve as the Chief Executive.

In addition to the Town Council, voters also elect:

- Board of Education
- Board of Finance
- Board of Assessment Appeals
- Zoning Board of Appeals
- Registrars of Voters

The Town Manager serves as the Director of Economic Development and works closely with the Planning, Assessing, Engineering and Public Works Departments as well as the Chamber of Commerce and the Farmington Valley Visitors Association to ensure that the needs of the business community are being met.

