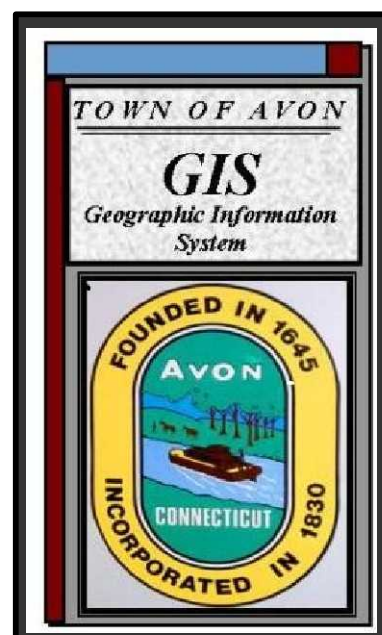
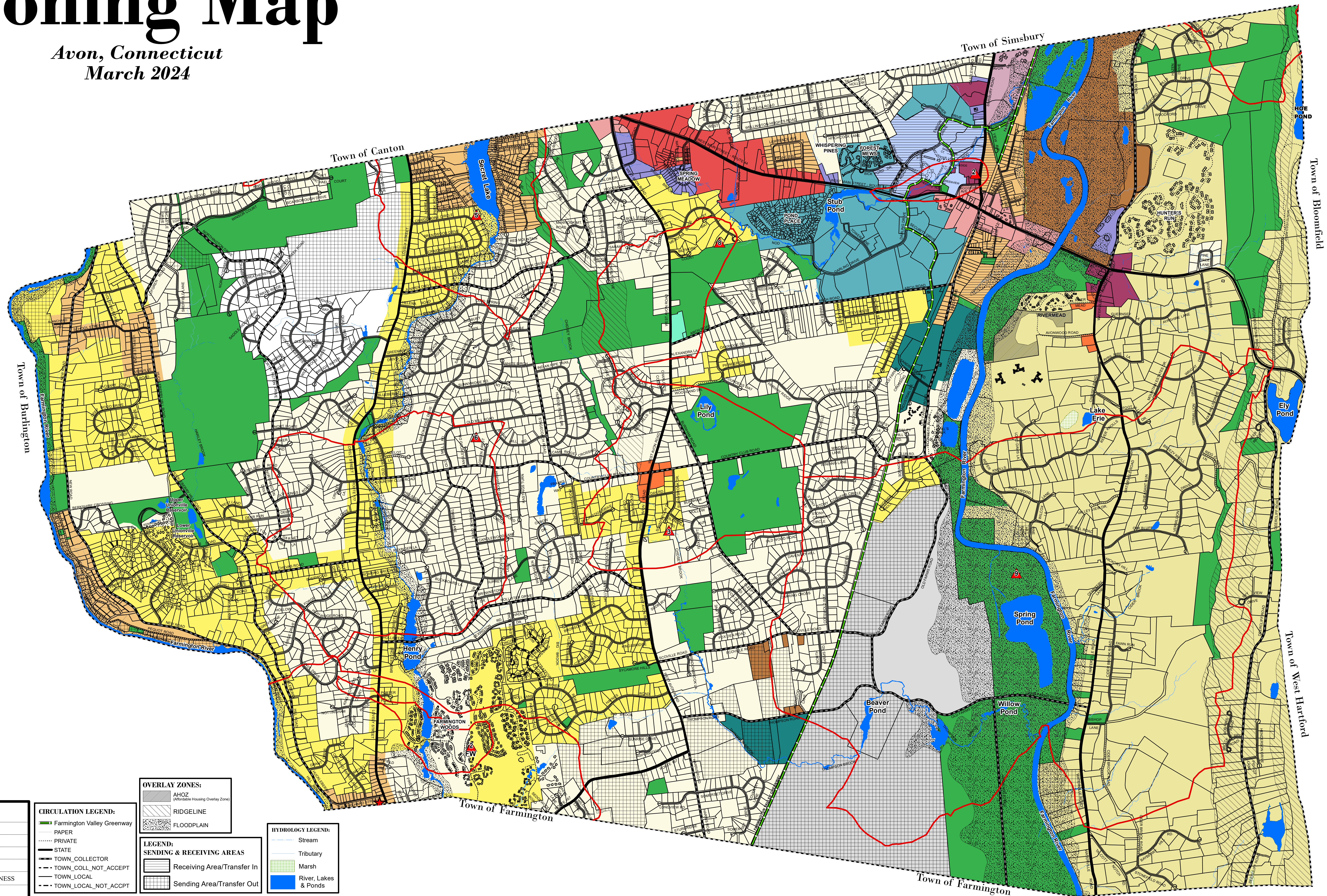


Town Of Avon Zoning Map

Avon, Connecticut
March 2024



Map Produced By:
Town of Avon GIS

ZONING LEGEND:

R-15	RESIDENTIAL
R-30	RESIDENTIAL
R-40	RESIDENTIAL
RU2A	RESIDENTIAL
NB	NEIGHBORHOOD BUSINESS
CP-A	COMMERCIAL PARK
CP-B	COMMERCIAL PARK
CS	COMMERCIAL - SPECIALIZED
CR	COMMERCIAL - RETAIL
AVC	AVON VILLAGE CENTER
IP	INDUSTRIAL PARK
I	INDUSTRIAL
RI	RESTRICTED INDUSTRIAL
OP	OFFICE PARK
EL	EDUCATIONAL LAND
ROS	RECREATION / OPEN SPACE
A	AGRICULTURAL

CIRCULATION LEGEND:

	Farmington Valley Greenway
	PAPER
	PRIVATE
	STATE
	TOWN_COLLECTOR
	TOWN_COLL_NOT_ACCEPT
	TOWN_LOCAL
	TOWN_LOCAL_NOT_ACCEPT

OVERLAY ZONES:

	444QZ (Affordable Housing Overlay Zone)
	RIDGELINE
	FLOODPLAIN

LEGEND: SENDING & RECEIVING AREAS

	Receiving Area/Transfer In
	Sending Area/Transfer Out

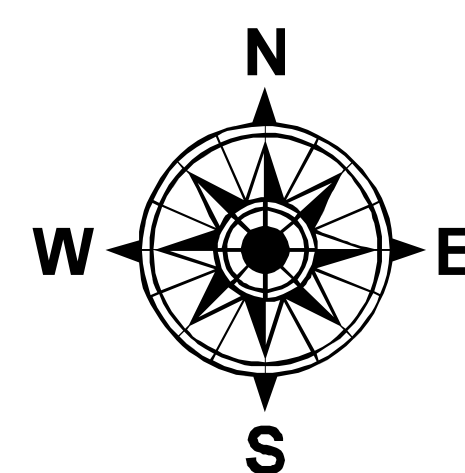
HYDROLOGY LEGEND:

	Stream
	Tributary
	Marsh
	River, Lakes & Ponds

- LEVEL A AQUIFER PROTECTION AREA CONTAINED WITHIN BOUNDARY AS SHOWN
- AVON WATER WELL SITES

NOTES:

- Level A Aquifer Protection Area well field #8, Revised June 2006.
- Level A Aquifer Protection Area well fields #2 and #9, Revised June 2007.
- Level A Aquifer Protection Area well field #5, Revised May 2008.
- Level A Aquifer Protection Area well fields FW #2, #3, and #6 Revised March 2009.
- Level A Area for Aquarion Water Company Nod Road Well Field, Revised April 2010
- Level A Protection Area well Field #3 (Revised), Revised March 2017
- Level A Area For Connecticut Water Company Charles W. House (Well Located In Farmington), Revised March 2017



Scale: 1"=1000'